



Shenzhen Bewell Technology Co., LTD

# ABOUT US

Shenzhen Bewell Technology Co., Ltd. was founded in 2010. We are a professional manufacturer engaged in the research, development, production, sale and service of Turnstile, Boom Barrier, Rising Bollard, Parking Lock, Parking System, Rising Bollard, Road Blocker and so on.

Our company covers an area of 5000 square meters and currently employs more than 200 people, including 50 engineers and technicians. We have 5 production lines, many years export experiences and have professional sales team to service our respectable customers from the worldwide, providing high quality products, safer products and OEM, ODM services to meet various demands.

We have professional engineer support, high efficiency sales team and competitive price superiority, and attract customers from all over the world, we export to over 40 countries, including European countries, Singapore, Malaysia, Indonesia, India, Thailand, Australia, USA, Canada, Mexico, Brazil, Colombia, Middle east and South Africa.

Now Bewell products have CE, ROHS and FCC certifications. We strictly in accordance with the ISO9001 quality standard requirements, and in future, we will continue make efforts to high standard to satisfy our respected customers. Quality is the life, we'll always keep in mind. We have maintained a long-term, stable and mutual benefit relationship with all partners, and are looking forward to creating miracles through win-win cooperation with you! Welcome to visit Bewell company.

# CONTENTS

Turnstile Gate Series	01~26
Parking System Series	26~48
Parking Bollard and Blocker Series	48~54
Face Recognition System Series	55~58
Fingerprint Time Attendance Series	59~60
Parking Lock Series	61~63
Sliding Gate and Folding Door Series	64~65
EAS Security Scanner Series	66~69
Transportation Facilities Series	70~73
Enterprise Certification	74~74



# Turnstile Gate Series

## BW-TSB950

### Bridge Type Tripod Turnstile



#### Technical Parameter

Framework	304 stainless steel
Dimensions	1200*280*980mm
Arm length	600-900mm
Dry contact	12V
LED indicating light	One
Card-reading window	Two
Rated power	120W
Operating temperature	-25℃ ~ +60℃ , RH ≤90%
Related humidity	≥ 90%RH
Comunication Interface	Rs485, distance ≤1200m
Power supply	AC 220V/110V ±10% 50/60MHZ (optional)
Opening transit speed	30-45 persons per minute
Closing transit speed	30-45 per minute

## BW-TSL1400

### Bridge Type Tripod Turnstile



#### Technical Parameter

Framework	304 stainless steel
Dimensions	1400*280*980mm
Arm length	600-900mm
Dry contact	12V
LED indicating light	One
Card-reading window	Two
Rated power	120W
Operating temperature	-25℃ ~ +60℃ , RH ≤90%
Related humidity	≥ 90%RH
Comunication Interface	Rs485, distance ≤1200m
Power supply	AC 220V/110V ±10% 50/60MHZ (optional)
Opening transit speed	30-45 persons per minute
Closing transit speed	30-45 per minute

## BW-TSY1500

### Bridge Type Tripod Turnstile



#### Technical Parameter

Framework	304 stainless steel
Dimensions	1200*280*980mm
Arm length	600-900mm
Dry contact	12V
LED indicating light	One
Card-reading window	Two
Rated power	120W
Operating temperature	-25℃ ~ +60℃ , RH ≤90%
Related humidity	≥ 90%RH
Comunication Interface	Rs485, distance ≤1200m
Power supply	AC 220V/110V ±10% 50/60MHZ (optional)
Opening transit speed	30-45 persons per minute
Closing transit speed	30-45 per minute

#### Description

All turnstile models are space efficient security barriers, with a compact design,yet offer sufficient space to integrate any access control system. They can be mounted with display, passage counter, card reader, token operation traffic lights, command console,alarm system against unauthorized entries,The unique dropping arm feature provides a fail safety solution in case of an emergency or power failure,Tproviding egress in case of crisis evacuations. Durability with minimal maintenance means years and millions of trouble free passages. The turnstile creates a secure environment in. for example, a reception area. Our turnstile are used in different applications including stadiums and arenas, perimeter and interior security, recreation and amusement parks, retail crowd control, transit fare collection and lobby access control.

#### Features&Benefits

- Semi-auto mode:After reading card the passenger pushes the arm by hand until he goes through the barriers and the arm arrives in home position.
- Full-auto mode:The passenger pushes the arm at a little strength after reading card,and the arm will automatically rotate forward by motor power until the arm arrives in home position.
- Pure mechanical mode : The passenger pushes the arm by hand until he goes through the barriers.
- Single or bi-directional function in mechanical and electrical versions.
- Automatic reset of barrier arms after each passage.
- Cable or wireless remote control panel key override control for emergency situations. Automatically arm drop down when power off or emergency.
- Adjustable time out delay.

#### Operating Modes

- Single passage in the set direction
- Bi-directional single passage
- Free passage in the set direction
- Always free or locked

## •Vertical Tripod Turnstile BW-TSV850



## BW-TSV850



### Product Application

Swing Turnstile ---can be compatible with IC card, ID card, barcode card, fingerprint reading card, face recognition device used for staff, provide civilized, orderly access methods, effectively manage the access of staff. It can be widely used in the station, wharf subway, factories, office buildings, hotels, clubs, intelligent communities, enterprises, and institutions that need intelligent access management.

### Product Advantages

Swing turnstile offers a compact, cost-effective, fast operating, easy-to-use, reliable entrance solution for internal or external use in areas where there is a large and constant flow of people. The advantages of using a turnstile compared to a conventional Gate include the better utilization of manpower, increased reliability, and improved security. This mechanism allows a single employee to enter the premises only after verification through the Access Control Module that is integrated onto the turnstile.

### Main Features

- 1.Auto-reposition function: After the card read, if the passengers haven't passed within the regulated time period, the tripod turnstile will be locked automatically
- 2.Bi-direction passing or uni-direction
- 3.When power off, the swing turnstile wing will be opened automatically
- 4.Self-lock function: arm will be locked automatically after passenger passing
- 5.LED passing arrow can show direction to indicate passenger to pass
- 6.Standard interfaces are convenient for the connection with different readers which can send relay signal
- 7.RS485 interfaces can connect turnstile with computer directly
- 8.Stable running with little noise

### Technical Parameter

Size	980*330*420mm
Material	Top 1.2mm+Body 1.0mm SUS304
Pass Width	500-550mm
Passage direction	Single directional/Bi-directional
Pass rate	30-35 persons/minute
Operating time	0.2 seconds
Power input	AC100-240V, 50/60HZ
Working voltage	24V
Working humidity	30%~95%
Working temperature	-40℃~+70℃
Working environment	Indoor/outdoor
Communication interface	Rs485, Dry contact
Mechanism	Mould machine core+mould bracket+Domestic solenoid

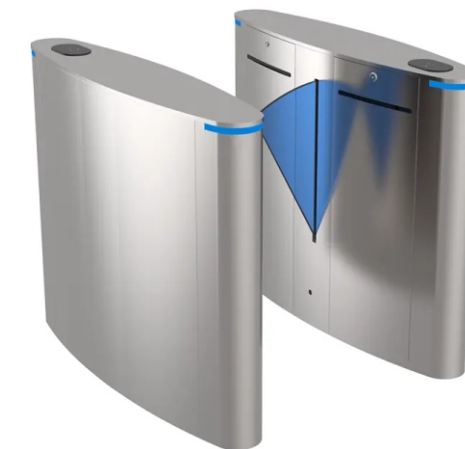
## BW-TFL1600 •Flap Turnstile



### Technical Parameter

Size	1200x300x1000mm
Material	Top 1.2mm+Body 1.0mm SUS304
Pass Width	600mm
Passage direction	Single directional/Bi-directional
Pass rate	20-30 persons/minute
Operating time	1 seconds
Power input	AC100-240V, 50/60HZ
Working voltage	24V
Working humidity	30%~95%
Working temperature	-40℃~+70℃
Working environment	Indoor/outdoor
Communication interface	Rs485, Dry contact
Mechanism	Mould machine core+mould bracket+Domestic solenoid

## BW-TFD1950 •Flap Turnstile



### Technical Parameter

Size	1200*280*980mm
Material	Top 1.2mm+Body 1.0mm SUS304
Pass Width	≤550mm
Passage direction	Single directional/Bi-directional
Pass rate	30-35 persons/minute
Operating time	1 seconds
Power input	AC100-240V, 50/60HZ
Working voltage	24V
Working humidity	30%~95%
Working temperature	-40℃~+70℃
Working environment	Indoor/outdoor
Communication interface	Rs485, Dry contact
Mechanism	Mould machine core+mould bracket+Domestic solenoid

## BW-TFD2300 •Flap Turnstile



### Technical Parameter

Size	1200x280x980mm
Material	Top 1.2mm+Body 1.0mm SUS304
Pass Width	≤550mm
Passage direction	Single directional/Bi-directional
Pass rate	30-35 persons/minute
Operating time	1 seconds
Power input	AC100-240V, 50/60HZ
Working voltage	24V
Working humidity	30%~95%
Working temperature	-40℃~+70℃
Working environment	Indoor/outdoor
Communication interface	Rs485, Dry contact
Mechanism	Mould machine core+mould bracket+Domestic solenoid



## BW-TFL2500

### •Flap Turnstile



#### Technical Parameter

Size	1400x280x980mm
Material	Top 1.2mm+Body 1.0mm SUS304
Pass Width	600mm
Passage direction	Single directional/Bi-directional
Pass rate	20-30 persons/minute
Operating time	1 seconds
Power input	AC100-240V, 50/60HZ
Working voltage	24V
Working humidity	30%~95%
Working temperature	-40℃~+70℃
Working environment	Indoor/outdoor
Communication interface	Rs485, Dry contact
Mechanism	Mould machine core+mould bracket+Domestic solenoid

## BW-TFH2800

### •Flap Turnstile



#### Technical Parameter

Size	1400x280x980mm
Material	Top 1.2mm+Body 1.0mm SUS304
Pass Width	600mm
Passage direction	Single directional/Bi-directional
Pass rate	20-30 persons/minute
Operating time	1 seconds
Power input	AC100-240V, 50/60HZ
Working voltage	24V
Working humidity	30%~95%
Working temperature	-40℃~+70℃
Working environment	Indoor/outdoor
Communication interface	Rs485, Dry contact
Mechanism	Mould machine core+mould bracket+Domestic solenoid

## BW-TFP1300

### •Flap Turnstile



## BW-TFY1450

### •Flap Turnstile



## BW-TFS2600

### •Flap Turnstile



#### Technical Parameter

Size	1200x300x1000mm
Material	Top 1.2mm+Body 1.0mm SUS304
Pass Width	600mm
Passage direction	Single directional/Bi-directional
Pass rate	20-30 persons/minute
Operating time	1 seconds
Power input	AC100-240V, 50/60HZ
Working voltage	24V
Working humidity	30%~95%
Working temperature	-40℃~+70℃
Working environment	Indoor/outdoor
Communication interface	Rs485, Dry contact
Mechanism	Mould machine core+mould bracket+Domestic solenoid

#### Description

All the gates models are space efficient security barriers, with a compact design,yet offer sufficient space to integrate any access control system. They can be mounted with display, passage counter, card reader, token operation traffic lights, command console,alarm system against unauthorised entries,interfaced with a PC through a RS232(RS485,TCP-IP)line.The unique swing arm feature provides a fail-safe safety solution in case of an emergency or power failure,providing egress in case of crisis evacuations. Durability with minimal maintenance means years and millions of trouble free passages. The gate creates a secure environment in. for example, a reception area. Our gates are used in applications including stadiums and arenas, perimeter and interior security, recreation and amusement parks, retail crowd control, transit fare collection and lobby access control.

#### Features&Benefits

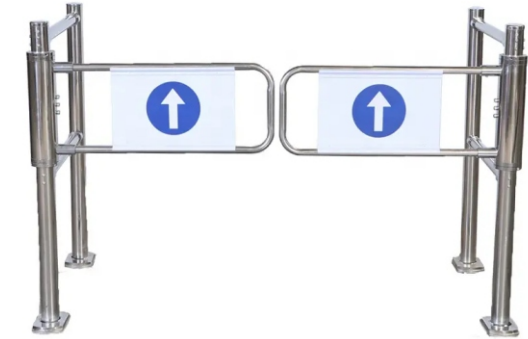
- Use IC cards,ID cards, Bar code or magnetic cards as automatic identification system and achieve access, attendance fees or function
- A direction indicator, showed that pedestrian access to the current status of, and guide pedestrians correct and smooth passage
- Display has been in use for statistics and numbers
- With voice and strobe light alerts
- A combination of infrared sensors and police antiillegal entry into pedestrian access, the protection of pedestrians smooth and the prevention of the channel following
- Double anti-clipping function,photocell anticlipping and mechanical anti-clipping
- Auto re-set function, if no passing during identified card-reading time,the system will reset automatically the passengers are prohibited to pass until their second identified reading
- The barrier can be set to delay closing in 1-60s after a valid card-reading

#### Operating Modes

- Single passage in the set direction
- Bi-directional single passage
- Free passage in the set direction
- Always free or locked

# BW-TBC1300

## •Swing Turnstile



### Technical Parameter

Size	2000*1000*150(customized)
Material	steel
Application places	Supermarket/shopping mall / Tourist attractions

# BW-TBC1650

## •Swing Turnstile



### Technical Parameter

Product name	Supermarket Swing Turnstile
Product Material	Steel
Dimension	1020*1000*1600(customized)
Pass Speed	40 person / min
Opening Time	0.2s
Type	Auto
Channels Width	600mm (customized available)
Color	Custom Made
Application	Supermarket/shopping mall / Tourist attractions

# BW-TBCC1950

## •Swing Turnstile



### Description

Waist height uni-directional turnstile

### Application

Suited for applications requiring one-way free rotating access  
Used extensively in supermarkets and retail stores  
Can be lifted and swung out of the way for occasional special needs access  
Chrome-plated barriers rails and gates are also available

### Technical Parameter

Product name	Supermarket entrance gate
Material	Steel/iron
Color	Custom Made
Type	Manual
Dimension	Custom Made
OEM	Support
Channels Width	2.0 m
Arm Length	1.0m
Application places	Supermarket/shopping mall / Tourist attractions

# BW-TBV1200

## •Swing Turnstile



### Technical Parameter

Product name	Portable Swing Turnstile
Material	304 Stainless Steel
Type	Fully automatic/semi-automatic
Dimension	1000mm*500mm*220mm or customizable
OEM / ODM	Support
Passage width	600MM-900MM or customizable
Pass speed	30-40 person/minute
Working temperature	-20℃-70℃
Working humidity	5%~90%
Access method	Two-way/One-way
Access mode	RFID card/fingerprint/face recognition

# BW-TBY1400

## •Swing Turnstile



### Technical Parameter

Size	1200*200*980mm
Material	Top 1.2mm+Body 1.0mm SUS304
Pass Width	600mm
Passage direction	Single directional/Bi-directional
Pass rate	40-45 persons/minute
Operating time	1 seconds
Power input	AC100-240V, 50/60HZ
Working voltage	24V
Working humidity	30%~95%
Working temperature	-40℃~+70℃
Working environment	Indoor/outdoor
Communication interface	Rs485, Dry contact
Mechanism	Mould machine core+mould bracket+Domestic solenoid

# BW-TBQ1450

## •Swing Turnstile



### Technical Parameter

Size	1200*280*980mm
Material	Top 1.2mm+Body 1.0mm SUS304
Pass Width	600-900mm
Passage direction	Single directional/Bi-directional
Pass rate	40-45 persons/minute
Operating time	1 seconds
Power input	AC100-240V, 50/60HZ
Working voltage	24V
Working humidity	30%~95%
Working temperature	-40℃~+70℃
Working environment	Indoor/outdoor
Communication interface	Rs485, Dry contact
Mechanism	Mould machine core+mould bracket+Domestic solenoid



## BW-TBDH1750

### •Swing Turnstile



#### Technical Parameter

Size	1200*280*980mm
Material	Top 1.2mm+Body 1.0mm SUS304
Pass Width	600-900mm
Passage direction	Single directional/Bi-directional
Pass rate	40-45 persons/minute
Operating time	1 seconds
Power input	AC100-240V, 50/60HZ
Working voltage	24V
Working humidity	30%~95%
Working temperature	-40℃~+70℃
Working environment	Indoor/outdoor
Communication interface	Rs485, Dry contact
Mechanism	Mould machine core+mould bracket+Domestic solenoid

## BW-TBY1800

### •Swing Turnstile



#### Technical Parameter

Size	1200*200*980mm
Material	Top 1.2mm+Body 1.0mm SUS304
Pass Width	600mm
Passage direction	Single directional/Bi-directional
Pass rate	40-45 persons/minute
Operating time	1 seconds
Power input	AC100-240V, 50/60HZ
Working voltage	24V
Working humidity	30%~95%
Working temperature	-40℃~+70℃
Working environment	Indoor/outdoor
Communication interface	Rs485, Dry contact
Mechanism	Mould machine core+mould bracket+Domestic solenoid

## BW-TBDH1850

### •Swing Turnstile



#### Technical Parameter

Size	1200*200*980mm
Material	Top 1.2mm+Body 1.0mm SUS304
Pass Width	600mm
Passage direction	Single directional/Bi-directional
Pass rate	40-45 persons/minute
Operating time	1 seconds
Power input	AC100-240V, 50/60HZ
Working voltage	24V
Working humidity	30%~95%
Working temperature	-40℃~+70℃
Working environment	Indoor/outdoor
Communication interface	Rs485, Dry contact
Mechanism	Mould machine core+mould bracket+Domestic solenoid

#### Product Application

Swing Turnstile ---can be compatible with IC card, ID card, barcode card, fingerprint reading card, face recognition device used for staff, provide civilized, orderly access methods, effectively manage the access of staff. It can be widely used in the station, wharf subway, factories, office buildings, hotels, clubs, intelligent communities, enterprises, and institutions that need intelligent access management.

#### Product Advantages

Swing turnstile offers a compact, cost-effective, fast operating, easy-to-use, reliable entrance solution for internal or external use in areas where there is a large and constant flow of people.

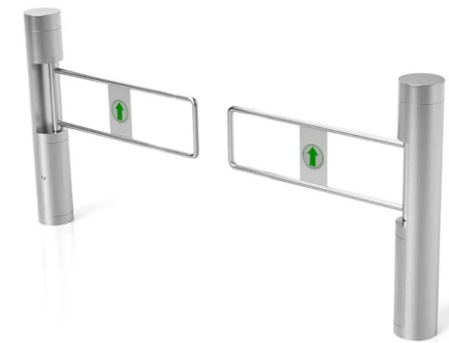
The advantages of using a turnstile compared to a conventional Gate include the better utilization of manpower, increased reliability, and improved security. This mechanism allows a single employee to enter the premises only after verification through the Access Control Module that is integrated onto the turnstile.

#### Main Features

- 1.Auto-reposition function: After the card read, if the passengers haven't passed within the regulated time period, the tripod turnstile will be locked automatically
- 2.Bi-direction passing or uni-direction
- 3.When power off, the swing turnstile wing will be opened automatically
- 4.Self-lock function: arm will be locked automatically after passenger passing
- 5.LED passing arrow can show direction to indicate passenger to pass
- 6.Standard interfaces are convenient for the connection with different readers which can send relay signal
- 7.RS485 interfaces can connect turnstile with computer directly
- 8.Stable running with little noise

## BW-TBYV1300

### •Swing Turnstile



#### Technical Parameter

Product name	Swing turnstile
Product material	304 Stainless Steel
Direction	Unidirectional
Gate opening method	RFID card, barcode card, fingerprint, QR code, face recognition

#### Product Application and Advantages:

Swing turnstiles are provided as an alternative to regulating pedestrian traffic. Thanks to its compact design and 90 cm arm length which is compatible with international wheelchair standards, It is an ideal solution to provide controlled passage for VIP and physically handicapped people.

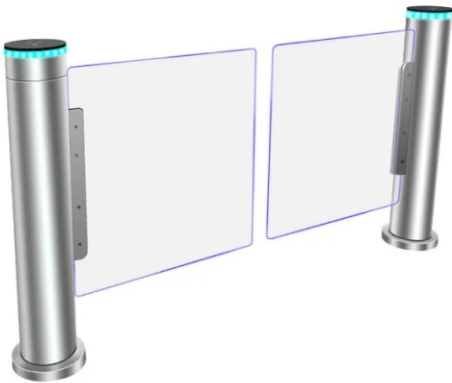
Swing Gates is applicable in shopping malls, supermarkets, fitness/wellness centers with its aesthetic and user-friendly design.

# BW-TFSP2600

## •Fast Speed Turnstile

Description

Cylindar Swing Turnstile ---can be compatible with IC card , ID card , barcode card, fingerprint reading card, face recognition device used for staff, provide civilized, orderly access methods, effectively manage the access of staff. It can be widely used in the station, wharf subway, factories, office building, hotel, clubs, intelligent community, enterprises and institution that need intelligent access management.



Technical Parameter

Material	304 stainless steel
Size	168*1050mm
Passageway width	600-900mm
Direction	Uni-direction or Bi-direction
Flow rate	40-45 persons/min
Mechanism	Servo motor driven
Power supply	AC220V/110V,50/60Hz
Working voltage	DC 24V
Operation Temperature	-15 °C - 70 °C
Operation Humidity	0 ~ 95% (No freeze)
Anti-panic mode	Automatically open when power off
Communication	Dry contact, Relay signal, Rs485

Main Features:

1. Working method can be set by the buttons on the main panel
2. Anti-pinch, anti-collision. If there is block during return of gate, motor stops working automatically. Reset again after a default delay, the force 2Kg.
3. Anti-illegal in, anti-intrusion, auto close for reverse direction.
4. Anti-collision, gate closes when no valid signal is given.
5. Protection functions for gate, gate open to prevent motor from being damaged if there is outer force collision.
6. Gates can be synchronous
7. Auto-reset. If not go through in a preset time, pass right would be cancelled automatically. (1-60s adjustable), default time is 10s.
8. Reset function by photocells, 4 or 6 pairs.
9. Anti-pinch function by photocells, 4 pairs
10. Compatible with Access control system, consumption system, ESD system, E-ticket system and so on.
11. One way or two way control
12. Unit can be controlled and administered by remote control
13. Led lamp indicator

# BW-TFJG4500

## •Fast Speed Turnstile

Description

The housing of super high-panel swing gate turnstile BW-TFJG4500 made of good quality stainless steel is durable; the mechanism modules are imported from an international DC brushless motor brand and precise positioning encoder, so as to ensure the gates can move quickly and accurately, stably and quietly, with low-power consumption, energy conservation and environment protection. It is suitable for a commercial building, metro station, airport customs queue, exhibition hall, government building, financial institution, senior clubs and other high-end indoor environments.



Technical Parameter

Product name	speed turnstile
Material	304 Stainless Steel
Passage width	550-900mm
Power voltage	AC100~240V, 50Hz
Passage width	600mm
Max current	5A
Operation environment temperature	-15℃~ 60℃
Relative humidity	less than 95% not condensed
Working Environment	Indoor
Input port	dry contact signal
Communications port	RS232/RS485 electric standard
Communications range	≤1200m

Features

Extra Tall Glass Panel Swing Gate with Stainless Steel Pedestal  
The Turnstile opens automatically to evacuate people in the event of an emergency, such as fire, power failure, etc.  
Mechanical anti-clamping functions for protection.  
The gate can be pushed slowly when a sudden impact force is applied beyond the safety range so as to protect the machine and the pedestrian effectively.  
All electric modules are designed to operate under the safety voltage of 24V, and configured with a residual current protective device to effectively avoid electric shocks.

High-panel design:

Adopted the high-panel design, it prevents pedestrians from jumping the swing gate, improving the security level greatly; While realizing the anti-crossing, its body is thinner and more beautiful, which can improve the image of the occasion and achieve a smaller occupied space. Starting from mechanical structure optimization and drive control optimization, it successfully solves the problems of operation shaking and mechanism overload that may exist in the common high-panel swing gate turnstile and achieves stable operation, anti-shaking and low noise, which not only ensures stability and long service life of the turnstile but also provides a good user experience.

All-around Personal Safety Protection

Triple anti-clamping: Super high-panel swing gate turnstile anti-clamping function is an advanced technology, including infrared anti-clamping, mechanical anti-clamping and anti-collision by advanced electric current detection, so as to protect the personal safety of passengers more comprehensively.

Anti-collision control:

When the gates instantaneously encounter an impulse force that is beyond the safety range, the gates can be slowly pushed for some distance to buffer the impact force towards the mechanism and the reversed impact force towards the user.  
Anti-electric shock: All electric modules are designed to operate under the safety voltage of 24V, and configured with a residual current protective device to prevent pedestrians from hurting from avoiding electric shocks.

Turnstile opens under power failures:

Adopts the industry's advanced Power-off Auto-Open Technology. When power is off, the turnstile system will automatically unlock the gates, which can be manually pushed to be open state, so as to evacuate people in the event of an emergency.  
Emergency open: Equipped with an emergency escape control device, the turnstile system will automatically open the gates to evacuate people.



## BW-TFSP2800

### •Fast Speed Turnstile

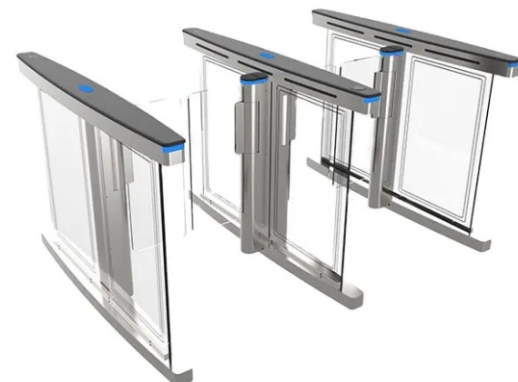


#### Technical Parameter

Framework	304 stainless steel
Dimensions	1500*120*990mm
Arm length	600-900mm
Dry contact	12V
LED indicating light	One
Card-reading window	Two
Rated power	120W
Operating temperature	-25℃ ~ +60℃, RH ≤90%
Related humidity	≥ 90%RH
Comunication Interface	Rs485, distance ≤1200m
Power supply	AC 220V/110V ±10% 50/60MHZ (optional)
Opening transit speed	30-45 persons per minute
Closing transit speed	30-45 per minute

## BW-TFSP3800

### •Fast Speed Turnstile

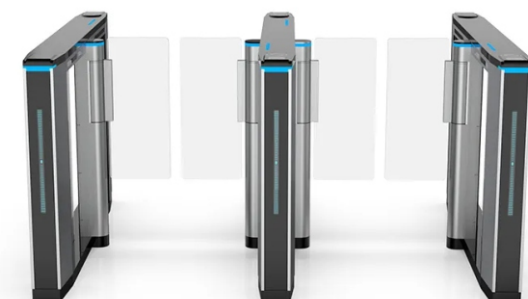


#### Technical Parameter

Size	1500*120*980 mm
Material	Full 12mm Black Acrylic +1.2mm SUS304
Pass Width	600mm
Passage Direction	Single directional/Bi-directional
Pass Rate	50 persons/minute
Operating Time	0.1 seconds
Power Input	AC100-240V,50/60HZ
Working voltage	24V 150W
Arm Material	10mm Acrylic
Application	Commercial buldings
Working Environment	Indoor/Outdoor
Communication Interface	Rs485, Dry contact
Mechanism	Brushless Servo Motor+Encoder+Clutch
MCBF	5,000,000 Cycles
Light	3-Color Stripes

## BW-TFSPH4500

### •Fast Speed Turnstile



#### Technical Parameter

Framework	304 stainless steel
Dimensions	1500*120*990mm
Arm length	600-900mm
Dry contact	12V
LED indicating light	One
Card-reading window	Two
Rated power	120W
Operating temperature	-25℃ ~ +60℃, RH ≤90%
Related humidity	≥ 90%RH
Comunication Interface	Rs485, distance ≤1200m
Power supply	AC 220V/110V ±10% 50/60MHZ (optional)
Opening transit speed	30-45 persons per minute
Closing transit speed	30-45 per minute

## BW-TFSPH3200

### •Fast Speed Turnstile



#### Technical Parameter

Size	1500*150*980 mm
Material	Full 1.5mm SUS304 snowline
Pass Width	600mm-900mm
Passage Direction	Single directional/Bi-directional
Pass Rate	35-40 persons/minute
Operating Time	0.2 seconds
Power Input	AC100-240V,50/60HZ
Working voltage	24V 105W
Arm Material	10mm Acrylic
Application	Commercial buldings, Airports, Hotels, Governemnt, Halls, etc
Working Environment	Indoor
Communication Interface	Rs485, Dry contact
Mechanism	Brushless Servo Motor+Encoder+Clutch
MCBF	5,000,000 Cycles
Light	3-color stripes + plates

#### Description

Speed gate is developed for high-end users,with safe and efficient,intelligent use, high-quality, sturdy and durable.

We adhere to the customer as the center, we adhere carefully to provide users with high-quality products. Designed to enhance security and optimize manpower at your entrance points. These systems will provide you with efficient and elegant control of individual access to your premises.

They are straightforward to install,easy to understand as implet to maintain.

The products can be widely applied to the following usages, such as industrial enterprises, Living garden, building offices, shops, museums, security installations, prisons, nuclear power plants airport, railways, seaports, exhibition centers, ski resorts, fitness, and other fields.

#### Features&Benefits

Safety first: In the fire or power-off, the door can be free to promote and ensure unimpeded;

Various Interfaces:I/O, RS232/485,CAN interfaces, which it is convenient to control signal input, and provides convenient centralized fire control interface;

Two working modes:NC and NO, which is easy to deal with peak and normal use;

Multiple control modes:There are unidirectional, bidirectional,free passage and authorization passage to meet fully the users'needs,which consist of nine control modes;

Precise positioning:precise positioning by photoelectric sensors, the work cycle of door is regular and precise positioning to ensure correct position after long work;

Various status information:It Provides operational status of each component, the direction of the status, the prevalent status, abnormal status, etc;

Indicator control:the indicator is able to show three status of front and back indicator (allow through,no through,system maintenance). Also which show the passage direction and passage status (A to pass,B to pass,no through), According to reasonable indicator control, which is convenient for users to management;

Machine core control:the two sides machine core work with coordination and synchroniztion, and the control system provide convenient management functions. the passage controller can control the machine core of all functions and settings of all parameters, which is reasonable for consisting of the various components of the machine core operation flow, and which is more intelligent and safety to design a access control function;

Sensor Analysis:The sensor got signal which real-time processing and analyzing a person or object for a variety of action, according to the results of analysis are to accurately control the action of machine core, indicator and alarm etc;

Sound output: Whether it is normal or emergency situation, the sound output can remind passengers and administrators timely and friendly, which cooperate with light and make the perfect effects;

Convenient setttings: With the screen and buttons consist of human-machine interface, the users can quickly and easily query and set channel parameters,no longer totally dependent on the host computer or extremely unfriendly pure key board to query and set parameters. This is not necessary functions, but once experience we believed that no one will forget it is great;

Automatic test: In the man-machine interface,system provides automatic test function, which can be a well test whether the components to work properly or not.

#### Operating Modes

- Single passage in the set direction
- Bi-directional single passage
- Free passage in the set direction
- Always free or locked

## BW-TFHD3500

### ●Single Lane Full Height Turnstile



#### Technical Parameter

Size	1500*1460*2300mm
Material	Top 1.2mm+Body 1.0mm SUS304
Pass Width	570~800mm
Passage direction	Single directional/Bi-directional
Pass rate	35-40 persons/minute
Operating time	1 seconds
Power input	AC100-240V, 50/60HZ
Working voltage	24V
Working humidity	30%~95%
Working temperature	-40℃~+70℃
Working environment	Indoor/outdoor
Communication interface	Rs485, Dry contact
Service life	3000000 cycles

## BW-TFHD3600

### ●Single Lane Full Height Turnstile



#### Technical Parameter

Size	1500*1460*2300mm
Material	Top 1.2mm+Body 1.0mm SUS304
Pass Width	570~800mm
Passage direction	Single directional/Bi-directional
Pass rate	35-40 persons/minute
Operating time	1 seconds
Power input	AC100-240V, 50/60HZ
Working voltage	24V
Working humidity	30%~95%
Working temperature	-40℃~+70℃
Working environment	Indoor/outdoor
Communication interface	Rs485, Dry contact
Service life	3000000 cycles

## BW-TFD3700

### ●Single Lane Full Height Turnstile



#### Technical Parameter

Size	1500*1460*2300mm
Material	Top 1.2mm+Body 1.0mm SUS304
Pass Width	570~800mm
Passage direction	Single directional/Bi-directional
Pass rate	35-40 persons/minute
Operating time	1 seconds
Power input	AC100-240V, 50/60HZ
Working voltage	24V
Working humidity	30%~95%
Working temperature	-40℃~+70℃
Working environment	Indoor/outdoor
Communication interface	Rs485, Dry contact
Service life	3000000 cycles

## BW-TFHS7000

### ●Full height turnstile



#### Technical Parameter

Size	2300*1450*2300mm
Material	Top 1.2mm+Body 1.0mm SUS304
Pass Width	570~800mm
Passage direction	Single directional/Bi-directional
Pass rate	20-40 persons/minute
Operating time	1 seconds
Power input	AC100-240V, 50/60HZ
Working voltage	24V
Working humidity	30%~95%
Working temperature	-40℃~+70℃
Working environment	Indoor/outdoor
Communication interface	Rs485, Dry contact
Service life	3000000 cycles

#### Description

The gate is designed to provide unsuper vised access control into, and cut of, high security facilities. The impenetrable construction virtually eliminates any unauthorized entry to restricted areas, The rigid welded stainless steel construction of the full height rotor turnstiles offers advanced reliability and vandal resistance, and guarantees many years of the turnstile trouble-free operation even in unfavourable environments. The rotor is manufactured in stainless steel and is available in either four section(90 degree) or three section(120 degree) versions. The use of electromagnetic drive and mechanism ensure smooth and quiet operation as well as dynamic braking and crossbars positioning.

#### Features&Benefits

- Bi-directional passage
- Electrical controls for both directions
- Integration with any identification or access control system
- Automatic reset of barrier wings after each passage
- Push button switch override controls for emergency situations
- Cable or wireless remote control
- Indoor and outdoor application
- Heavy-duty high precision mechanism Nickel Plated for high corrosion resistance
- Mechanism designed not to lock at 45°
- Modular assembly provides fo moving turnstiles in through confined routes for final installation
- Easy access to electronic control modules
- Modular plug-in electronics provides for easy and quick repairs
- Programmable electronic selections i.e. Auto relock after a predetermined time if no action is detected
- Power failure options-unit remians locked or unlocked during power fail mode
- On board conter unit standard-retrievable by hand held module
- Remote mounting of control electronics possible
- A Self centering mechanism to ensure complete rotation of the head to the rest position
- An anti backup device prevents reverse rotation once the head has moved 30 degree from its rest position
- A hydraulic damper to ensure smooth an quiet operation

#### Operating Modes

- Single passage in the set direction
- Bi-directional single passage
- Free passage in the set direction
- Always free or locked



## BW-KY1600

### •Kids Turnstile

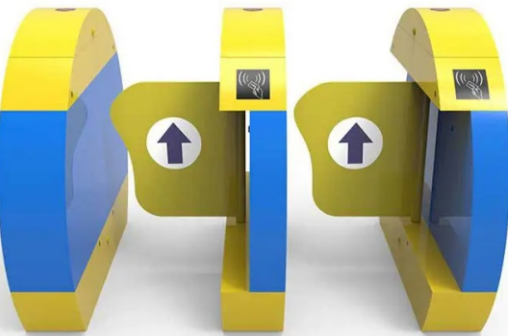


#### Technical Parameter

Material	304 stainless steel
Turnstile size	280x990x1200mm
Channel width	600~1200mm (customized)
Operation	Mechanical two-way operation
Drive voltage	DC 24V
Input voltage	220V, 50HZ
Operating temperature	-25℃ ~ +60℃, RH ≤90%
Related humidity	≥90%RH
Comunication Interface	Rs485, distance ≤1200m
Traffic speed	30~45 persons per minute
Use for	Kids in kindergarten
Arm length	500-900mm
Rated power	120W

## BW-KY2500

### •Kids Turnstile

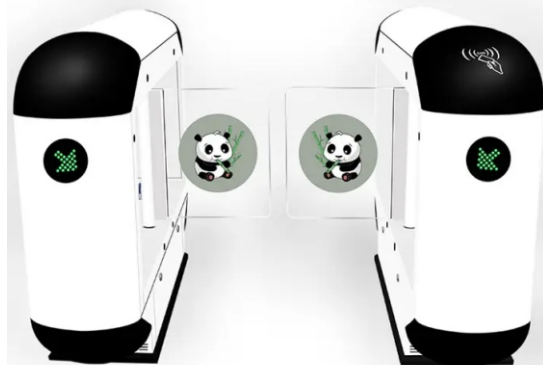


#### Technical Parameter

Material	304 stainless steel
Turnstile size	280x800x1000mm
Channel width	600~1200mm (customized)
Operation	Mechanical two-way operation
Drive voltage	DC 24V
Input voltage	220V, 50HZ
Operating temperature	-25℃ ~ +60℃, RH ≤90%
Related humidity	≥90%RH
Comunication Interface	Rs485, distance ≤1200m
Traffic speed	30~45 persons per minute
Use for	Kids in kindergarten
Arm length	300-600mm
Rated power	120W

## BW-KY2800

### •Kids Turnstile



#### Technical Parameter

Material	304 stainless steel
Turnstile size	280x900x1200mm
Channel width	600~1200mm (customized)
Operation	Mechanical two-way operation
Drive voltage	DC 24V
Input voltage	220V, 50HZ
Operating temperature	-25℃ ~ +60℃, RH ≤90%
Related humidity	≥90%RH
Comunication Interface	Rs485, distance ≤1200m
Traffic speed	30~45 persons per minute
Use for	Kids in kindergarten
Arm length	500-900mm
Rated power	120W

#### Description

All the gates models are space efficient security barriers, with a compact design, yet offer sufficient space to integrate any access control system. They can be mounted with display, passage counter, card reader, token operation traffic lights, command console, alarm system against unauthorised entries, interfaced with a PC through a RS232(RS485, TCP-IP) line. The unique swing arm feature provides a fail-safe safety solution in case of an emergency or power failure, providing egress in case of crisis evacuations. Durability with minimal maintenance means years and millions of trouble free passages. The gate creates a secure environment in. for example, a reception area. Our gates are used in applications including stadiums and arenas, perimeter and interior security, recreation and amusement parks, retail crowd control, transit fare collection and lobby access control.

#### Features&Benefits

- Use IC cards, ID cards, Bar code or magnetic cards as automatic identification system and achieve access, attendance fees or function
- A direction indicator, showed that pedestrian access to the current status of, and guide pedestrians correct and smooth passage
- Display has been in use for statistics and numbers
- With voice and strobe light alerts
- A combination of infrared sensors and police antiillegal entry into pedestrian access, the protection of pedestrians smooth and the prevention of the channel following
- Double anti-clipping function, photocell anticlipping and mechanical anti-clipping
- Auto re-set function, if no passing during identified card-reading time, the system will reset automatically the passengers are prohibited to pass until their second identified reading
- The barrier can be set to delay closing in 1-60s after a valid card-reading

#### Operating Modes

- Single passage in the set direction
- Bi-directional single passage
- Free passage in the set direction
- Always free or locked

## BW-TDY2600

### •One Arm Turnstile



#### Technical Parameter

Technical	Parameter
Material	304 Stainless Steel
Communication interface	RS485/TCP/IP
Arm length	250-500mm
Application	Subway, supermarket, office, school
Channel width	600 mm
Size	1200*980*200 (mm)
Housing thickness	1.5 mm
Driving motor	24V
Opening/Closing Time	0.2s
Input Voltage	AC110V~220V±10%, 50HZ~60HZ
Working environment	Indoor and outdoor
Operating temperature	Temperature: -30℃ ~ 60℃
Life span	5 million times
Traffic speed	About 35 persons/minute

#### Distinctive Function

- Speed gate retractable turnstile
- Temperature and face recognition access control
- Pass rate: 35 person /min
- Unlock time: 0.2s
- Constructed of 304 stainless steel
- Can support also two-sided card readers, paper tickets, fingerprint / bio-metric scanning, and coins

## BW-TSFM550

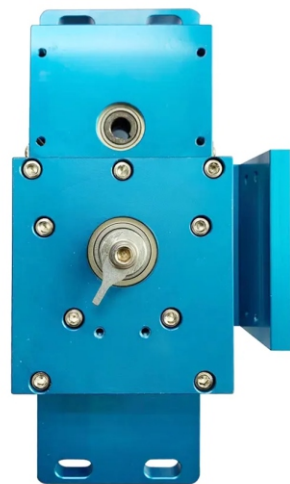
### •Full Automatic Tripod Turnstile Mechanis



## BW-TSFBM650

### •Full Automatic Brushless Tripod Turnstile Mechanism

#### Technical Parameter

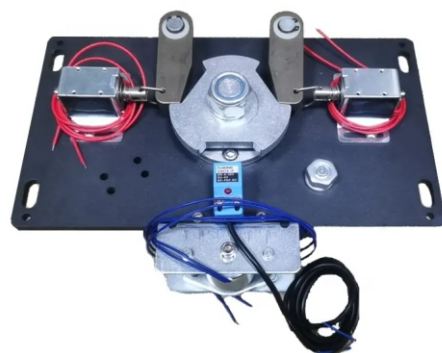


Size	273*116*145
Material	Main body: 6061 aluminum alloy, mandrel: electroplated 45# steel, turntable: ADC12 aluminum alloy
Pass Width	500-600mm
Passage direction	Single directional/Bi-directional
Pass rate	40-60 persons/minute
Operating time	0.2 seconds
Power input	AC100-240V,50/60HZ
Working voltage	24V
Working humidity	30%~95%
Working temperature	-40℃~+70℃
Working environment	Indoor/outdoor
Communication interface	Rs485, Dry contact

## BW-TSSM120

### •Semi Automatic Tripod Turnstile Mechanism

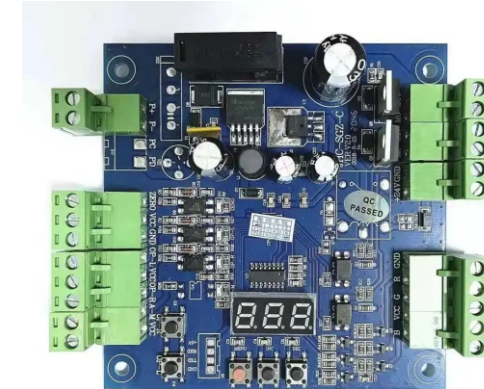
#### Technical Parameter



Power Supply	AC220V±10V, 110V±10V, 50HZ/60HZ
Machine core	Semi Automatic,Solenoid and electromagnet structure
Operating Temperature	-45℃-60℃
Relative Humidity	≤95%, No Condensation
Motor	no motor,spring driving,
Communication Connection	without RS485 Communication
Running life	3--4 Million(Continuous Opening and Closing Operation)
Use	For semi-automatic tripod turnstile
Input interface	Switch signal (COM port for the ground )

## BW-TSCB55

### •Tripod Turnstile Control Board



The control board is compatible with about 98% of the tripod turnstile gate machines on the market. The control board can be used for two-way traffic, power off and falling bar, LED direction indication, brake opening signal, etc.

#### Technical Parameters

1. Power supply voltage: DC24V,50HZ
2. Working environment temperature: - 10 ℃, 60 ℃
3. Relative temperature: no condensation less than 95%
- 4.Maximum channel width is 510mm
5. Traffic speed: 30-40 people/min (IC card)
6. Electromagnet: 20W/2W

#### Operating instructions for system parameter setting:

Tripod turnstile gate control board wiring instructions:

First set the type of gate (two types of power off, power of free access).

Power off the pole: When power is off, the top pole will automatically fall, pedestrians can be free to pass. After the call first press the bar, then raise the bar, the bar will automatically lock.

Free passage after power off: when the power is off,the mechanism will not lock, pedestrians can freely push into it. After the power is on, the mechanism will be automatically locked ,pedestrians must swipe their cards before passing.

#### Setting instructions of parameters:

After the control panel is powered on, the LCD screen will display the default state, and the default state will display the control panel and the number of entries.

Control panel keys: "MENU" key, "INC" up key, "DEC" down key, 3 operation keys

#### Key instructions:

"MENU" button:

- 1: Long press this button in the standby interface to enter the system menu
- 2: In the system menu interface, you can enter the parameter setting interface
- 3: Save the parameter settings, and then exit the system menu interface

"INC" button: Select parameter up

"DEC" button: Select parameter down

NOTE: In the system menu and menu setting interface, if there is no key operation in 5S, the system will automatically exit the menu interface

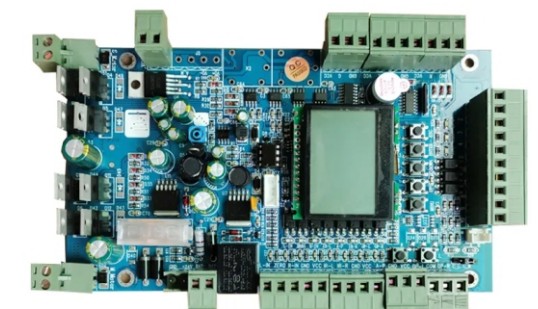
## BW-TFFW25

### •Flap Wing



## BW-TFCB220

### •Flap Turnstile Control Board

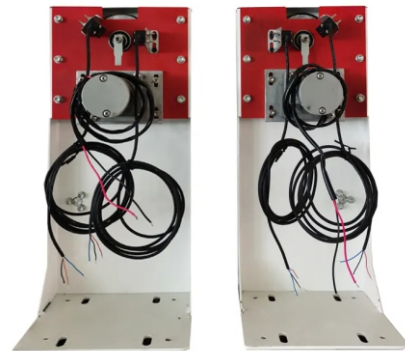




## BW-TFM550

### •Flap Turnstile Mechanism

#### Technical Parameter



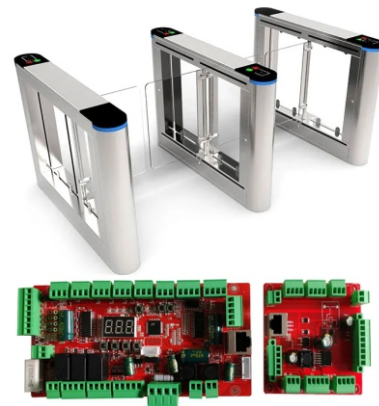
Product name	304 Stainless Steel Retractable Flap Barrier Gate Mechanism
Power	AC220V±10V, 50/60HZ;
Operating Temperature	-45℃-60℃
Relative Humidity	≤95%, No Condensation
Passage Width	550mm( 900mm optional)
Passing Speed	Normally open-50persons/min; Normally closed-50persons/min
Manufacturing Technique	CNC laser cutting
Motor	DC Brushless motor, 140W/24V
Gate Opening and Closing time	≤ 0.4S
Working environment	indoor and outdoor(added the rainshed)
Motor Operation Speed	1600R/Min
Communication Distance	≤1200M

## BW-TFCB350

### •Swing Turnstile Control Board

#### Technical Parameter

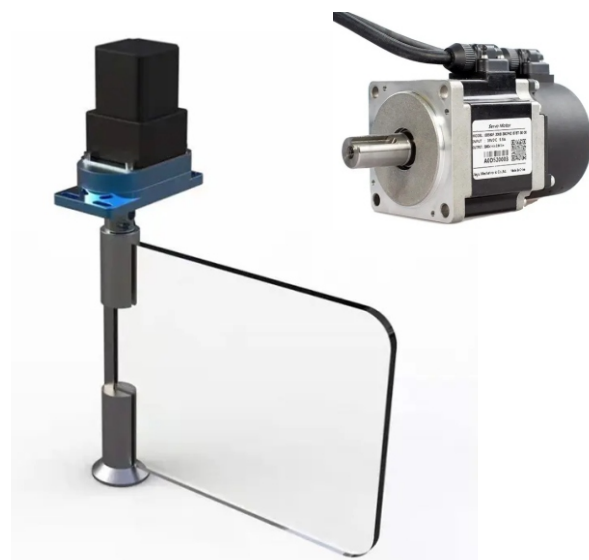
1. Power supply voltage: DC24V,50HZ
2. Working environment temperature: - 10 ℃ , 60 ℃
3. Relative temperature: no condensation less than 95%
4. Maximum channel width is 510mm
5. Traffic speed: 30-40 people/min (IC card)
6. Electromagnet: 20W/2W



## BW-FSPM850

### •Speed Turnstile Dc Servo Motor

#### Technical Parameter



Applicable industries	Servo motor gear box reducer
Gearing arrangement	Planetary
Use for	For Servo motor of swing turnstile
Ratio	1:50
Rated speed	3000rpm
Famax. for 10000h	230n
Average lifetime	20000h
Output torque	36nm
Backlash	16 Arcmin
Applicable Industries	Hotels, Machinery Repair Shops, Home Use, Construction works
Customized support	OEM
Noise	<58Db
Input speed	3000rpm
Input speed	3000rpm

## BW-TFSM550

### •Speed Turnstile Mechanism



#### Technical Parameter

product name	High-Speed Gate Mechanism
Opening time	0.6S
Passing speed	30-50 people / minute
Communication	Rs485
Input voltage	AC220V/110V
Communication distance	1200m
Humidity	95%
Working temperature	- 15 ° C - 80 ° C

## BW-TSIP8

### •Inductive Proximity Switch



## BW-TSAS8

### •Air Switch



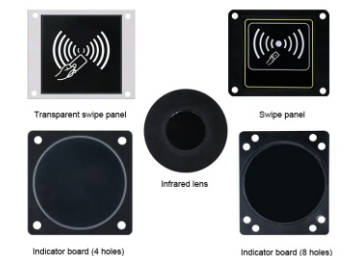
## BW-TSLD10

### •Light Direction Panel



## BW-TSTA06

### •Top Acrylic Cover



#### Technical Parameter

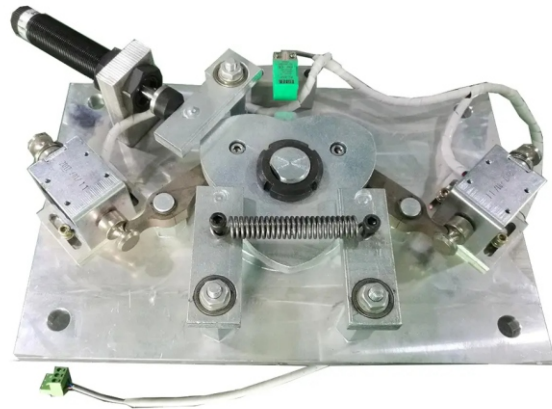
Hole quantity	4/8 holes
Size	112*133mm/117*117mm
Height	4.5mm
Hole size	9mm
Inner circle diameter	106.5mm
Usage	For tripod gate, flap gate, swing gate, speed hight turnstile, turnstile

## BW-TFLM220

### •90 Full Height Turnstile Mechanism

#### Technical Parameter

Size	350*225*165.5mm
Material	SUS304
Pass Width	600~800mm
Passage direction	Single directional/Bi-directional
Pass rate	30-40 persons/minute
Operating time	1 seconds
Power input	AC100-240V, 50/60HZ
Working voltage	24V
Working humidity	30%~95%
Working temperature	-40℃~+70℃
Working environment	Indoor/outdoor
Communication interface	Rs485, Dry contact
Service life	3000000 cycles

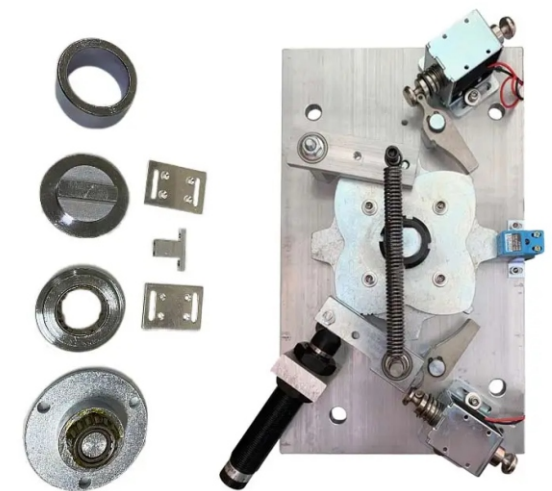


## BW-TFLM280

### •120 Full Height Turnstile Mechanism

#### Technical Parameter

Size	350*225*165.5mm
Material	SUS304
Pass Width	600~800mm
Passage direction	Single directional/Bi-directional
Pass rate	30-40 persons/minute
Operating time	1 seconds
Power input	AC100-240V, 50/60HZ
Working voltage	24V
Working humidity	30%~95%
Working temperature	-40℃~+70℃
Working environment	Indoor/outdoor
Communication interface	Rs485, Dry contact
Service life	3000000 cycles



#### Functions& Features

1. Running stably without noise and mechanical impact
2. The passing person number of the persons can be set
3. Several ways of working molds for you to choose
4. Bi-direction or one direction permitted, one forbidden, or one direction charged, one for free, and all the working molds set by the buttons in the main control board
5. Beam falling and lifting can be controlled in far distance so to satisfy the special requirement of the users and the request for fire protection.
6. Direction-guide lights in the turnstile to tell you whether the direction to go or not
7. The standard electrical interface connected with various kinds of reader and writer equipment, RS485 Communication interface, Relay interface, Level interface
8. All the functions realized in one integration machine and controlled and managed by the computer in the far distance

9. The number of the persons passed by can be counted automatically which can also be displayed in LED
10. The beam can be lifted and fall when power is cut-off, arms auto rise up when power on, and auto stop on the obstacle
11. The function with or without card-reading memory can be set according to your demand.
12. Self-check and alarm for co-inventing to operate

## BW-TFLS12

### •Full Height Turnstile Mechanism Spring



## BW-TFLDCF15

### •Solenoid Valve for Tripod Turnstile and Full Height Turnstile



## BW-TFLM550

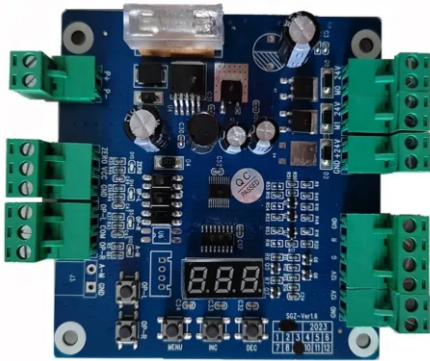
### •Full Height Turnstile Motor





# BW-TFLCB220

## •Full Height Turnstile Control Board



The control board is compatible with about 98% of the tripod turnstile gate machines on the market. The control board can be used for two-way traffic, power off and falling bar, LED direction indication, brake opening signal, etc.

### Technical Parameters

1. Power supply voltage: DC24V,50HZ
2. Working environment temperature: - 10 °C , 60 °C
3. Relative temperature: no condensation less than 95%
4. Maximum channel width is 510mm
5. Traffic speed: 30-40 people/min (IC card)
6. Electromagnet: 20W/2W

### Operating instructions for system parameter setting:

Tripod turnstile gate control board wiring instructions:

First set the type of gate (two types of power off, power of free access).

Power off the pole: When power is off, the top pole will automatically fall, pedestrians can be free to pass. After the call first press the bar, then raise the bar, the bar will automatically lock.

Free passage after power off: when the power is off,the mechanism will not lock, pedestrians can freely push into it. After the power is on, the mechanism will be automatically locked ,pedestrians must swipe their cards before passing.

### Setting instructions of parameters:

After the control panel is powered on, the LCD screen will display the default state, and the default state will display the control panel and the number of entries.

Control panel keys: "MENU" key, "INC" up key, "DEC" down key, 3 operation keys

### Key instructions:

"MENU" button:

- 1: Long press this button in the standby interface to enter the system menu
- 2: In the system menu interface, you can enter the parameter setting interface
- 3: Save the parameter settings, and then exit the system menu interface

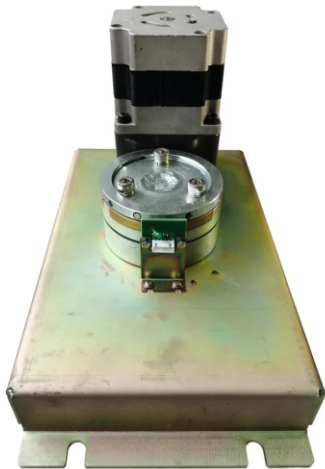
"INC" button: Select parameter up

"DEC" button: Select parameter down

NOTE: In the system menu and menu setting interface, if there is no key operation in 5S, the system will automatically exit the menu interface

# BW-TFL2800

## •Full Automatic DC Brushless Full Height Turnstile Mechanism



### Technical Parameter

Material	SUS304
Pass Width	600~800mm
Passage direction	Single directional/Bi-directional
Pass rate	30-45 persons/minute
Operating time	1 seconds
Power input	AC100-240V, 50/60HZ
Working voltage	24V
Working humidity	30%~95%
Working temperature	-40 °C ~+70 °C
Working environment	Indoor/outdoor
Communication interface	Rs485, Dry contact
Service life	3000000 cycles

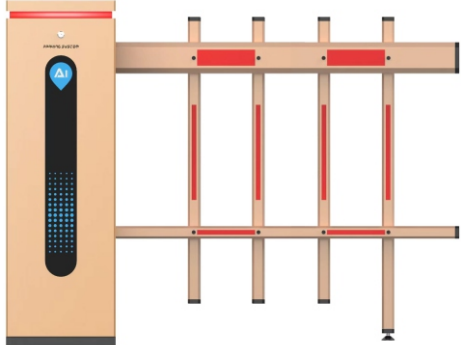
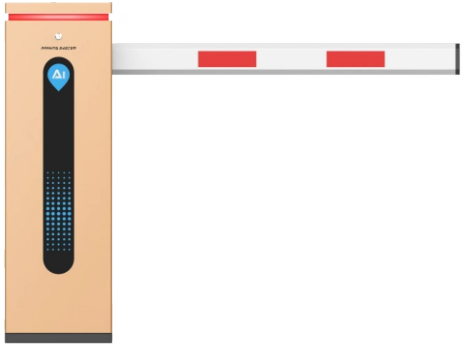
### Functions& Features

1. Automatically low noise mechanism core equipped, highly cost-performance
2. Sense positioning, reducing mechanical impact make the lifetime longer
3. Operating efficiency, 1~2 seconds open & close
4. Lowest Noise: No matter in operating or outside control, Noise control under 30db
5. Self-checking and Alarm warning for maintain
6. Resetting: System cancel authorized pass if passenger delayed pass
7. Anti-following: prevent illegal passing
8. Anti-clamp: The wings will stop during in external block, the wings reset again after the default delay
9. The rotary wings will be locked automatically if the system does not receive an IR signal
10. Multi-passage for variety application demands, cover 99% needs on earth
11. Programmable signal separate control: pass time, pass speed, etc. parameter
12. RS232/RS485 interface meet all kind of communications or wireless connection
13. Compatible IC/ID card, flexible couple
14. Long-distance management through COMPUTER
15. Customize Options: LED display, Voice guide, Warning Lamps, Indicator Lights guide, Audible & Visible Alarm

# ■Parking System Series

# BW-DZ820

## • Boom Barrier



### Technology Parameter

Power supply	220V/110V
Motor watt	90W
Drive	Torque motor
Standard operation mode	Open by remote control
Max remote control distance	30m
OEM/ODM service	Yes
Adjustable length for the boom arm	Yes
Input	Switch signal
Lift time	3~6s
Boom arm length	3~6m
Size	355*249*1035mm
Boom type	Straight, tolding, fencing, telescopic
IP rating	Ip54
Voltage	AC220V 10% 50Hz
Boom to ground	890mm

### Product Description

Boom gate, also known as a boom barrier, is a bar or pole pivoted to allow the boom to block vehicular access through a controlled point. Typically the tip of a boom gate rises in a vertical arc to a near vertical position. Boom gates are often paired either end to end, or offset appropriately to block traffic in both directions.

Automatic Boom Barriers are basically Automatic Entrance are Gates equipped with a torque motor which lifts the boom arm to be move in both up and down position. Electro-mechanical and hydraulic drive mechanism makes it more suitable for smooth operations with intensive use.

These products are available with unique designs and shapes to manage wide range of Residential, Commercial and Industrial applications.

**Salient Features:**

All Boom barrier gate series are compatible to integrate with any access control devices like, parking system, RFID Readers, Access Readers, and Toll Systems etc.

1. Integrative machine core: all part is made by mold, so all parts can be more accurate. And so the barrier gate can be much more stable;
2. Left or right installed can be amendable. Customer can amend install direction by himself;
3. Accurate link mechanism: link mechanism can release arm's shake and motor load, so the barrier gate can move more stable and barrier gate's working life can be more longer;
4. 70W turbine worm transmission deceleration induction motor: Drive Steady, Noise Lower, Structures Compact, can realize self-locking.

## BW-DZ850

• Boom Barrier



**Technology Parameter**

Arm type	straight arm, folding arm, fence arm or customized
Length of arm	1m to 6m
Colour	gold, yellow, black
Relative humidity	≤95%
Motor power	140W
Working voltage	24V+10%/50HZ
Ambient temperature	-30℃~80℃
Lift time: generally	1.5~6S
Protection class	Ip44
Height of the center of the brake lever from the ground	850mm
Remote control distance	≤40m
Input interface	+ 12V level signal or pulse signal greater than 100ms
Drive current	less than 10mA
Chassis size	355mm×280mm×1000mm
Chassis weight	50KG

## BW-DZ860

• Boom Barrier

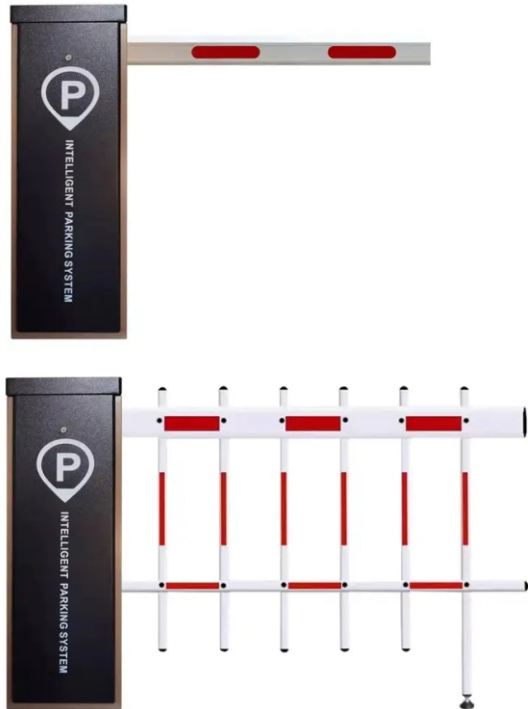


**Technology Parameter**

Arm type	straight arm, folding arm, fence arm or customized
Length of arm	1m to 6m
Colour	gold, yellow, black
Relative humidity	≤95%
Motor power	140W
Working voltage	24V+10%/50HZ
Ambient temperature	-30℃~80℃
Lift time: generally	1.5~6S
Protection class	Ip44
Height of the center of the brake lever from the ground	850mm
Remote control distance	≤40m
Input interface	+ 12V level signal or pulse signal greater than 100ms
Drive current	less than 10mA
Chassis size	355mm×280mm×1000mm
Chassis weight	50KG

## BW-DZ870

• Boom Barrier



**Technology Parameter**

Arm type	straight arm, folding arm, fence arm or customized
Length of arm	1m to 6m
Colour	gold, yellow, black
Relative humidity	≤95%
Motor power	140W
Working voltage	24V+10%/50HZ
Ambient temperature	-30℃~80℃
Lift time: generally	1.5~6S
Protection class	Ip44
Height of the center of the brake lever from the ground	850mm
Remote control distance	≤40m
Input interface	+ 12V level signal or pulse signal greater than 100ms
Drive current	less than 10mA
Chassis size	355mm×280mm×1000mm
Chassis weight	50KG

## BW-DZ880

• Boom Barrier



**Technology Parameter**

Arm type	straight arm, folding arm, fence arm or customized
Length of arm	1m to 6m
Colour	gold, yellow, black
Relative humidity	≤95%
Motor power	140W
Working voltage	24V+10%/50HZ
Ambient temperature	-30℃~80℃
Lift time: generally	1.5~6S
Protection class	Ip44
Height of the center of the brake lever from the ground	850mm
Remote control distance	≤40m
Input interface	+ 12V level signal or pulse signal greater than 100ms
Drive current	less than 10mA
Chassis size	355mm×280mm×1000mm
Chassis weight	50KG



## BW-DZ900

### • Boom Barrier

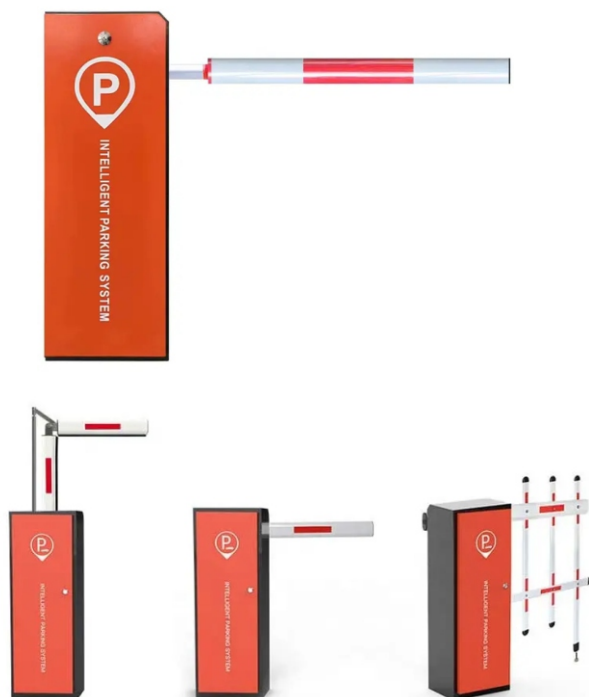


#### Technology Parameter

Arm type	straight arm, folding arm, fence arm or customized
Length of arm	1m to 6m
Colour	gold, yellow, black
Relative humidity	≤95%
Motor power	140W
Working voltage	24V+10%/50HZ
Ambient temperature	-30℃~80℃
Lift time: generally	1.5~6S
Protection class	Ip44
Height of the center of the brake lever from the ground	850mm
Remote control distance	≤40m
Input interface	+12V level signal or pulse signal greater than 100ms
Drive current	less than 10mA
Chassis size	355mm×280mm×1000mm
Chassis weight	50KG

## BW-DZ950

### • Boom Barrier



#### Technology Parameter

Arm type	straight arm, folding arm, fence arm or customized
Length of arm	1m to 6m
Colour	gold, yellow, black
Relative humidity	≤95%
Motor power	140W
Working voltage	24V+10%/50HZ
Ambient temperature	-30℃~80℃
Lift time: generally	1.5~6S
Protection class	Ip44
Height of the center of the brake lever from the ground	850mm
Remote control distance	≤40m
Input interface	+12V level signal or pulse signal greater than 100ms
Drive current	less than 10mA
Chassis size	355mm×280mm×1000mm
Chassis weight	50KG

#### Mechanical Properties:

The chassis is durable and waterproof, and can be used in outdoor environment.

Using an integrated movement and full mold quantitative production, greatly improving product stability and ensuring the operating accuracy of the gate;

Precision three-link mechanism is adopted to make the gate rod perform a quick and stable action with slow start and pause without impact, effectively reduce the vibration of the gate rod, reduce the load of the motor, and prolong the service life of the gate;

140W integrated gear DC motor, stable transmission, low noise, compact structure, no impact when locked, protect the controller and prolong the service life of the controller;

#### Electrical Characteristics

High system integration and powerful functions;

Using lifting overtime protection, the motor will not be overheated, and it can run all day long to prevent abnormal damage to the gate;

Using imported high-power relays to ensure reliable operation of gates.

Adopt imported photoelectric isolation protection circuit to ensure signal integrity and strong anti-interference.

Integrated wireless remote control receiving module with high-performance millions of learning codes to ensure the stability of operation.

Using a unique arc extinguishing processing circuit to ensure the service life of the control board.

Using the transformer with imported magnetic core, it can work stably in the outdoor damp environment.

Integrated optical, electrical and mechanical control, flexible and convenient operation, safe and reliable use.

## BW-DZ1200

### • Boom Barrier



#### Technology Parameter

Power supply	220V/110V
Motor watt	90W
Drive	Torque motor
Standard operation mode	Open by remote control
Max remote control distance	30m
OEM/ODM service	Yes
Adjustable length for the boom arm	Yes
Input	Switch signal
Lift time	3~6s
Boom arm length	3~6m
Size	355*249*1035mm
Boom type	Straight, folding, fencing, telescopic
IP rating	Ip54
Voltage	AC220V 10% 50Hz
Boom to ground	890mm

#### Product Description

Boom gate, also known as a boom barrier, is a bar or pole pivoted to allow the boom to block vehicular access through a controlled point. Typically the tip of a boom gate rises in a vertical arc to a near vertical position. Boom gates are often paired either end to end, or offset appropriately to block traffic in both directions.

Automatic Boom Barriers are basically Automatic Entrance are Gates equipped with a torque motor which lifts the boom arm to be move in both up and down position. Electro-mechanical and hydraulic drive mechanism makes it more suitable for smooth operations with intensive use.

These products are available with unique designs and shapes to manage wide range of Residential, Commercial and Industrial applications.

# BW-GGDZ2100

## • Boom Barrier



### Parameters

- Patented product
- Environmental protection and energy saving
- Smooth operation
- Speed regulation
- Safety and anti smashing
- High quality and low failure
- Low noise
- Low energy consumption
- Energy saving and environmental protection
- No need for external power supply
- Powered by Solar panels

### Description:

3.2m BW-GGDZ2100 Advertising boom barrier is another medium of out of home Advertising or Outdoor Media Advertising. It is safer, more valuable, and more beautiful. Nowadays, advertising stays everywhere. A combination of parking and advertising is a creative idea that serves both the purpose of security and marketing.

BW-GGDZ2100 traffic barriers are a mosaic of high strength aluminum blades. It is a perfect combination of optics and electricity that is designed for 24X7 operations. The barrier housing is a very rugged and sturdy material which is splash proof and dust proof to avoid corrosion so it can be mounted outdoor without any covering/housing. Both barrier housing and arm plate are equipped with LED lights which can be controlled via timer for setting up of time wise activations. It has inbuilt pressure sensor which performs the auto open function.

It also has anti – crash function which enables the barrier remains open if any car stay under the arm. The length of the boom and arm plates can be customized per the requirement. The bottom of the boom is sealed with rubber which prevents the barrier in case of any unwarranted incidents. Boom plate turns while boom lifts for displaying the advertising function.

At night with a well-lighted background, Advertising is more beautiful on the barrier. The barrier can be operated in multiple ways through remote controller, push button and long range reader. The barrier can be operated manually in case of a power failure or emergency.

### Product Introduction of Advertising Barrier

The print advertising barrier BW-GGDZ2100 adopts the appearance design of the iPhone Apple machine, coupled with the calmness of agate black, which is simple and stylish, giving people a noble and atmospheric feeling. It can not only manage the orderly entry and exit of vehicles, but also achieve a huge advertising effect through its unique advertising form. And its multiple safety features such as: anti-smashing pressure wave, anti-smashing rubber tube, ground sense anti-smashing, priority of opening the brake, etc., make users more assured and worry-free.

### Technology Parameter

Product type	Car Park Access Road Advertising Boom Barrier Gate
Feature	With advertising screen
Working voltage	220V+10%/50HZ
Motor power	180W~250W
Working environment temperature	-30℃~80℃
Relative humidity	≤95%
Rod length	3.8 meters (special length can be customized)
Light box screen size	square 920mm*390mm
Inclined	450*920mm
LED strip power	16.7A 200W

# BW-DZCBAC

## • Control Board(AC)

### Technology Parameter

Duty Cycle	100%
Interface	loop detector,infrared beam
Voltage	AC110V or 220V
Material	ABS+Plastic
Warrenty	One year
Usage	barrier gate in parking system



### Traffic Parking Boom Barrier Gate Control Board Feature:

- Fast processing speed.
- Power intergrated chip driver.
- Large memory and stable operation.
- Rich interfaces and strong functions.
- Can be realize complex algorithm and completely intelligent.
- Adjustable auto delay for close barrier gate.
- Remote control and wire control for selection.
- 'Open', 'Close' and 'Stop' controlling interfaces.
- RS-485 communication serial interface (optional).
- Both external and internal loop detectors are supported.
- Safety: the boom will rise if it hits something when falling
- Three control buttons: for boom raising, falling and pausing.
- Traffic light signal connection device: red light for stop; green light for pass.
- Infrared photocell design: for avoiding the crash when the boom falling, so as to prevent the vehicles from being pressed.
- Special spring device: Both the compression spring and tension spring can be used in the machine. Using the compression spring can avoid accidents caused by the tension spring.
- The humanized clutch device: In case of power off,unlock the clutch device and raise the boom manually. By the time the power is supplied, lock the clutch device to make it working normally again.

# BW-DZCBDC

## • Control Board(DC)

### Specification

Item	Value
Product name	Control board for DC brushless boom barrier gate
Main control board size	175 x 135 mm (length * width)
Card capacity	9999
Storage record	4200
Communication interface	W26, can external 485 communication format
Input contact interface	Normal 4 no voltage, external 128
Output contact interface	Normal 4 relay, external 128
Communication rate	19200 BPS (4800 ~ 115200 BPS)
Keys	16
Status indicates	8 leds
LCD display	16 x 2 characters





### Salient Features:

- All Boom barrier gate series are compatible to integrate with any access control devices like, parking system, RFID Readers, Access Readers, and Toll Systems etc.
1. Integrative machine core: all part is made by mold, so all parts can be more accurate. And so the barrier gate can be much more stable;
  2. Left or right installed can be amendable. Customer can amend install direction by himself;
  3. Accurate link mechanism: link mechanism can release arm's shake and motor load, so the barrier gate can move more stable and barrier gate's working life can be more longer;
  4. 70W turbine worm transmission deceleration induction motor: Drive Steady, Noise Lower, Structures Compact, can realize self-locking.

## BW-DZ3500

### • Boom Barrier

#### Features:

- Patented product
- Environmental protection and energy saving
- Smooth operation
- Speed regulation
- Safety and anti smashing
- High quality and low failure
- Low noise
- Low energy consumption
- Energy saving and environmental protection
- No need for external power supply
- Powered by Solar panels

#### Technology Parameter

Function	Automatic Traffic Parking Vehicle Management Solar Boom Barrier
Special feature 1	Free of Signal Line
Special feature 2	Free of Power Line
Product name	Solar Boom Barrier Gate
Speed	0.6s, 0.9s, 2s, 4s
Cabinet material	Mild steel
Application	Outdoor
Boom type	Straight, folding, fencing boom
Direction	Left/right fixed and right/left direction
Power	Powered by Solar panels

#### Functions:

1. When Power off, gate automatically open, no clutch design, no need human intervention. When power on, gate automatically reset, restore to the gate closing state, truly unattended, fire safety standards. If special requirement, manual operation is required when power off. Operating arm open and close by hand also can be realized by setting up control board DIP switch, which ensure that the system can be used at any time.
2. The use of Single Balance Spring device, good regulation, no noise, indefatigable, not easy to break, safe and reliable.
3. A variety of input and output modes can be selected, normally open normally closed optional.
4. Arm opening angle can be adjusted from 60 to 90 degrees, 10 degrees resolution, suitable for eaves prominent place to install.
5. Closing speed can be adjusted, 0.9S, 1.3S.
6. Barrier gate up & down signal relay switch output.
7. Barrier gate running state: OK signal output indicating that the gate is working properly.
8. Barrier gate operation abnormal alarm signal output.
9. Traffic light relay switch signal output.
10. External loop detector signal anti-smashing interface, infrared sensor signals anti-smashing interface.
11. Count mode interface.
12. Arm Open priority anti-smashing function, regardless of the current gate in what state, the operator through the triple push button, software or remote control to issue a gate arm up, the gate will give priority to the implementation of the opening action.
13. Barrier with anti-collision protection function, when the vehicle hits the gate arm, arm can be swing out to avoid damage to the vehicle and barrier gate machine.
14. Delay down selection function.
15. high sensitivity arm auto reverse function (intensity can be adjusted).
16. Parking system interface.
17. RS485 or RS232 network communication control up&down interface (no need to install communication module).
18. Anti-collision alarm signal interface.
19. Arm direction can be changed easily.
20. Adjustable speed port (S curve adjustment).
21. High-strength precision cast steel, industry moving parts beyond the industry quality

### Instruction:

Problems encountered by ordinary road Gates:

High power consumption?

Unable to save energy and protect the environment?

Is it inconvenient to move and dismantle the temporary construction site?

Cabling planning difficulties?

Traditional data transmission?

Unable to use 4G signal transmission?

The above problems are not a problem for the solar boom barrier gate.

Solar boom barrier gate, with external solar panel and external 24V reserve power supply, 6-meter straight pole of solar boom barrier gate, free of power line and signal line, directly inserted into the camera.

Dual battery 24V power supply, safe voltage, convenient use, no external power supply, bid farewell to the traditional 220V voltage (220V voltage is a dangerous voltage, which can directly cause death)



## BW-SDDZ600

### • Manual Boom Barrier



#### Technology Parameter

Type	Manual
Material	Stainless steel
Boom Length	customize
Arm Shape	Oval/Octagon
Arm color	red&white/blue&white/black&yellow/gold
Thickness	1.2mm
Weight	35KG

#### Product Description:

- Control the rise and fall of the barrier pole by pressing the handle
- Push the handle up to drop the pole
- Pull down the handle to raise the pole
- No electricity needed

# BW-IS18

## • Infrared Sensor

### Technology Parameter

Beams	1*1
Lamp source	Infrared digital pulse
Sensor speed	50-700msec adjustable
Outdoor alarm distance	10m-30m
Indoor alarm distance	20m-60m
Working voltage	DC 12V~24V
Alert output	Replay contact output NO or NC
Contact Rating	AC/DC30V,0.5Amax
Temperature	-25℃ ~+65℃
Size	76mm*49mm*22mm
Relative Humidity	≤95%RH,No condensation
Tamper-proof output	Contact output NC
Horizontal adjust	180° (±90°)
Vertical adjust	20° (±10°)
Case material	PC engineering material



### Specifications:

Power Supply: DC/AC 12 to 24V  
Work current : 50MA  
temperature : +50~ (-30)  
Water Proof, UV proof  
Size : 49.2 x 76 x 21.6MM  
Detector Area: indoor 20m. Outdoor 10m

### Features:

- 1.Single Beam Infrared Sensor with high levels of anti-RFI / EMI capability.
- 2.Sealed design to anti-rain(fog), dust(worms) and other integrated weather, the detector sensitivity will increase automatically(AGC circuit).
- 3.High-powe-r transmitter, sensitivity surplus degree up to 90%.
- 4.High-powe-r infrared receiver tube, low-powe-r process technology.
- 5.Adjustable of beam interdiction period, to make it more flexible and adaptable.
- 6.When interrupt, the relay output switch signal without voltage.
- 7.Professional anti-jamming optical housing.

# BW-DG50

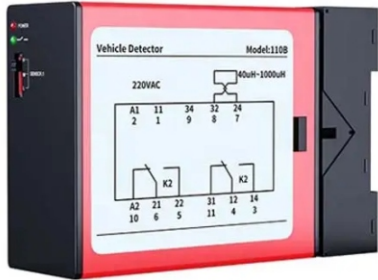
## • Loop Detector

### Functions & Features :

1. Reset Switch: The reset switch enables the detector to be manually reset during registering and testing and it is a process of system recovery;
- 2.Selectable Pulse Time: This feature sets the length of time that the pulse relay will be lasting for 1 Second or 0.5 Seconds ;
- 3.Pulse Relay Selection: The Pulse Relay may be configured to energize on detection of a vehicle or when the vehicle leaves the loop;
- 4.Sensitivity Reinforcement: This feature sets the un-detecting level to maximum sensitivity to prevent failing to detect vehicles as big trucks;
- 5.Switch Sensibility Adjustable: 4 sensitivity settings are available on the switches to change sensitivity ;
- 6.Switch Frequency Adjustable: 4 frequency settings are available to prevent signal interference with neighboring loops ;
- 7.Filtering Option: This option is used to provide a delay between detection of the vehicle and switching of the output relay. This relay is normally used to prevent false detection of small or fast-moving objects ;
- 8.Permanent Presence Option: This feature ensures the detection of the vehicle will be maintained when the vehicle stays within the loop area for extended periods

### Technology Parameter

Model	Pd132
Item name	Vehicle Single Loop Detector
Supply voltage	230V AC , 115V AC, 24V DC/AC, 12V DC/AC( See the label on the detector)
Voltage tolerance AC	+10% / -15%
Voltage tolerance DC	20m±15%-60m
Power Consumption	4.5VA
Output relays	240V/5A
Frequency range	20 kHz to 170 kHz
Reaction time	10ms
Signal holding time	Unlimited / limited when loop is permanently covered 10 minutes
Sensitivity	Adjustable in 4 increments
Loop inductance	Total loop plus connection wiring: 50μH to 1000μH. Ideal is 100μH to 300μH
Loop connection wiring	Maximum length 20 meters, twisted at least 20 times per meter
Size of Housing	78x40x108 mm (L x W x H)



# BW-XQ20

## • Loop Wire



### Technology Parameter

Color	red
Material	tinned copper wire
3-6 meters	5-6 turns
The scope of work	Between 100uH-300uH



# BW-SK35

## Manual Switch

Technology Parameter

Protection Level	Ip54
Max. Current	3A
Max. Voltage	AC250V 600V
LED	NO
Product name	Automatic Reset Start Push Pull Button Switch
Electric shock form	2 normally open 2 normally closed
Rated current	3A
Rated voltage	AC250V 600V
Product weight	0.13KG/pc
Product features	automatic reset, without lock
Application	Transportation, scientific, medical, communication
Use for	boom barrier gate parking system
Dimension	117*50*39mm
Wiring required	Wiring Control

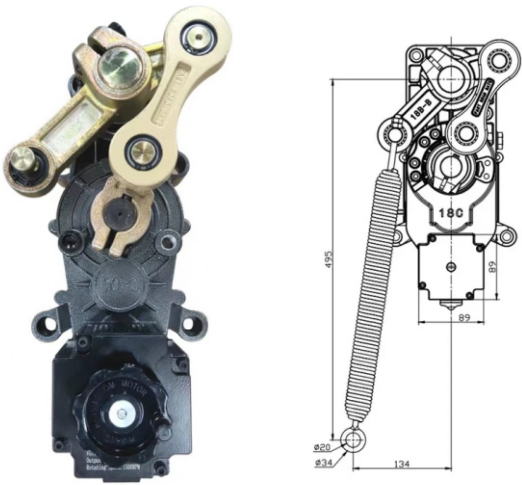


# BW-DZJXDC

## Mechanism(DC)

Motor Parameters

Voltage: DC 24V  
Output Efficiency: 140W  
Humidity: 85% or lower  
Insulation Class: F  
Gate Operation Time: 0.3-5 S  
Altitude:1000 Meter or lower  
Current: 6 A  
Operation Lifetime: >=5 million times  
Temperature Range: -40°C to +60°C (temperatures below -20°C require a heating element)



Features:

- 1.Gear transmission structure, beautiful appearance, compact structure, strong overall sense.
- 2.The new products are tailor-made for this industry and the gear adopts the processing technology of worm grinding wheel grinding after heat treatment, fine rolling of hard alloy hob, etc., the accuracy grade ≥ GB / T100951, 2-2001 7 level.
- 3.The new product uses with DC brushless motor to avoid the problem of carbon brush life. Adjustable speed.
- 4.The entire seal structure, high degree of protection (≥IP55); have a rainproof capability.
5. DC24V (Safe voltage).
- 6.Installed the chassis, adjust the position automatically after power on, and adjust the angle of rising pole and falling pole at will.

## Exactitude aluminum alloy die-casting motor

Exactitude aluminum alloy die-casting motor base reduces the noise and joint abrasion to prolong the barrier gate working life.

Thank you for purchasing the boom barrier motor from Elefine. This product adopts the latest mold design technology, mold die-casting manufacturing technology, DC control speed technology, and can be quickly interchanged, noclutch design, more reliable quality and more convenient use. The movement adopts two-stage worm gear transmission and curved crank arm three-link structure, and the landing rod is fast and stable. Easy maintenance and long service life.

# BW-DZJXAC

## Mechanism(AC)

Technology Parameter

Power	220V±10%, 110V±10%, 50/60HZ
Running Time	speed is 6s, move straight boom up to 6m
Motor	AC motor, 80W, 24V
Operating Temperature	-40℃ -75℃
Relative Humidity	≤95%, No Condensation
Communication Distance	≤1200m
Boom length	≤6S
Boom Type	straight, articulated, fence
Protection grade	Ip54
Application	Parking Lots, Toll Gates, Goods Yards, Railway Crossings, Commercial Premises, Aparment Block Access



Functions & Features

1. Wheel manual release. In case of power off, rotate the wheel manual release on the bottom of the motor to raise the boom manually. When power is on, the motor will work normally.
2. Machine core with strong and double springs, make the machine core works more steadily.
3. Die-casting aluminum alloy motor, precise and good at thermal radiation.
4. Crank and rod structure makes the boom run placidly.
5. Double safety limit switches (photoelectricity limit switch and motor memory sensor).
6. Reversing on the obstacle.
7. Auto-closing.
8. Support the infrared photocell for antibumping function (optional).
9. Support loop detector (optional).
10. R&G light interface (AC220V, can support lamp with 40W).
11. Wire control (switch signal)/Remote control (418MHZ).
12. Digital limit, more precise.
13. Open, close control interface for parking system.
14. Provide limit state signal to the parking system.

# BW-YKQJ12

## Remote Control Receiver

Material:ABS



BW-LD24

• Radar(24G)

Technology Parameter

Frequency	24 Ghz
Response Time	100ms
Signal Output	Relay
Detecting Range	0 m~6 m
Vertical Detecting Width	43°
Horizontal Detecting Width	11°
Size	105 mm*78 mm*26 mm
Waterproof Rate	Ip65
OEM	Supported

Features:

Radar Vehicle Detector is developed for the parking barrier gate. It can precisely control the rising and falling of the barrier arm and it is an ideal product to replace the traditional loop detector and loops that have to cut ground and are not good-looking. Also, the loop detector is not easy to maintain. radar is suitable for all types of barrier arm, it can detect the target sensitively and effectively when vehicles or pedestrians and other targets are in the arm area, most importantly avoiding the arm from falling or smashing people. It can work all day and in all-weather.

24G:



79G:



BW-LD79

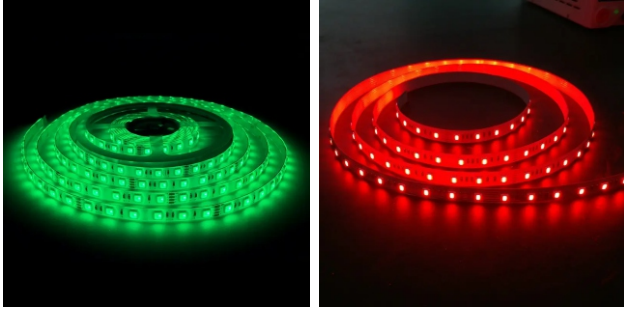
• Radar(79G)

Technology Parameter

Product name	Wireless BT radar vehicle detector for boom barrier
Voltage	DC9V-36V (standard 12V)
Vehicle detection probability	> 99.99%
Pedestrian detection probability	> 99%
Horizontal beam	120°
Vertical beam	15°
Response time	100ms
Dimension	80(L)X62(W)X20(H)
Weight	120g
Signal output	witching quantity
Relative humidity	At 25℃, the relative humidity is 98%
Use for	For Car Parking System Boom Barrier
Power consumption	1.6W~1.8W
Detection level range	-1m ~1m (adjustable)
Detect distance	0.3~6m (adjustable)
Detect object	Man and car
Working voltage	DC10~16V
Waterproof	Ip67
Working temperature	-40℃ ~+85℃
Frequency	77GHZ~81GHZ
Antenna gain	10dbi
Antenna transmitting power	12.5dbm
MTBF	MTBF > 18000 hours

BW-GD15

• Arm Light



Feature:

- 1.LED strips inbuilt photosensitive sensor, LED will auto switch on when the environment is dark
- 2.Control board, when the boom is horizontal status, LED is RED
- 3.when vertical, the LED is GREEN

Easy to Install:

- 1, Drill two holes 3.2mm in diameter for each 50cm on the boom, the distance between these two holes is 2~2.5cm(the width of LED strips);
- 2, Put double-sided tape on the boom;
- 3, Stick the LED strips on the boom firmly, hand pressure the LED strips smoothly and hard;
- 4, Insert the buckle into the hole to fix it;
- 5, Note that the whole LED strip needs to be fixed on the boom

BW-DZZC80

• Arm Hold



BW-DZJT15

• Arm Chuk



Technology Parameter

Material	Iron
Color	White
Application	Boom barrier

Technology Parameter

Application	Applied to various systems: license plate recognition system, parking lot card swiping system, access applications ofcommunity, shopping malls, or government agencies.
Product name	Stand for Car Barrier Arm's Scaffold Holder for Vehicle Barrier Arm
Color classification	white telescopic tow bar, orange tow bar
Adjustable height	78-100cm
Cushion	anti-collision cushion
Height adjustable	support
Bast	15*15cm reinforced base
Support rod	thick support rod
Accessories	4pcs expansion screws
Function	can effectively extend the life of boom barrier gate
Mounting Location	mounted on the end of the pole away from boom barrier chassis



## BW-DZTH15

### • Spring

#### Technology Parameter

Product name	Boom barrier spring
Material	Aluminum Alloy
Arm length	1 ~ 6.0 meters
OEM	Support



## BW-TYG180

### • Elliptic Arm

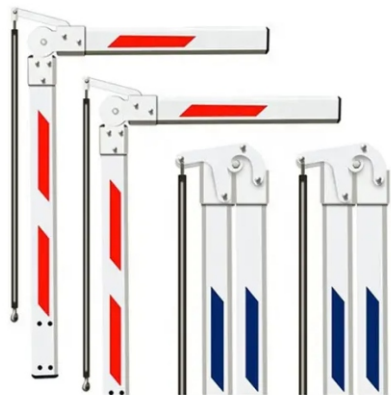


#### Technology Parameter

Color	white, yellow, silver, black
Material	aluminum alloy
Product length	1-8m customized
Specification	100*45 100*50 86*44 90*45 80*45mm

## BW-ZLG220

### • Folding Arm

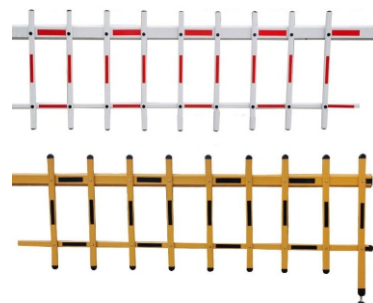


#### Technology Parameter

Color	white, yellow, silver, black
Material	aluminum alloy
Product length	1-5 meters customized
Specifications: rod diameter * overall diameter	38*76mm 45*76mm 50*76mm

## BW-ZLG250

### • Fence Arm



## BW-ZLG220

### • Folding Arm Connector



#### Specifications:

Product name: 90 Degree Curved Arm Connector Mechanism

Arm type: two sections of octagonal straight rods are connected by connecting mechanisms

Arm size: 100\*45mm, 85\*45mm

#### How to Operate:

You have to punch 8 holes on the arm

The steel pipe is to be welded by yourself, according to the length of the first section or ask us to weld the steel pipe infactory according to the length specified by customer

The first octagonal rod (the part of the rod near the chassis) should be 16 cm longer than the stainless steel pipe of themechanismThe length of the second section (the part of the rod away from the chassis) should not exceed the length of the firstsection (the part of the rod near the chassis)

#### Technical Parameter

Product name	Folding arm barrier gate connector
Material	304 Stainless Steel
Color	White
Arm size	100*45mm, 85*45mm
Type	Automatic
Thickness	5mm
Arm type	Straight
Application	Boom barrier gate
Weight	1KG

## BW-YG120

### • Round Arm



#### Technology Parameter

Color	white, yellow, silver, black
Material	aluminum alloy
Product length	1-5 meters customized
Specifications: rod diameter * overall diameter	38*76mm 45*76mm 50*76mm

## BW-BJG100

### • Straight Arm



#### Technical Parameter

Color	white, yellow, silver, black
Material	aluminum alloy
Product length	1-8m customized
Specification	100*45 100*50 86*44 90*45 80*45mm

## BW-DZG100

### • Telescopic Arm



# BW-CPSB6000

## • License Plate Recognition System

### License Plate Recognition Technology

Based on computer technology, image processing technology, and fuzzy recognition, Shenzhen Bewell Communication License Plate Recognition (LPR) builds a vehicle's feature model and identifies vehicle features such as number plates, vehicle models, and colors. It is a special computer vision system that targets a specific target. It can automatically extract license plate advanced image processing, pattern recognition, and artificial intelligence technology. The images from an image, automatically divide characters and then identify characters. It uses collected image information to be processed, and the digital, letter, and Chinese characters of the become a reality. the license plate can be automatically and accurately recognized in real-time, and the recognition result is directly given so that the computerized monitoring and management of the vehicle

Basic functions and characteristics of the system

- 1.Avoid trouble with card reader installation and maintenance.
- 2.Car owners don't worry about trouble with IC cards lost.
- 3.Unique rolling led electronic display, local language available so that owners and managers read easily.
- 4.Staff reduction and efficiency improvement.
- 5.Save the cost of the IC card won't worry about the lack of IC cards.
- 6.It can be operated in conjunction with the police alarm system to effectively combat illegal vehicles and assist in social security management.
- 7.There are anti-lifting levers, full unloading, photoelectric control, and high-quality hood gates with an accurate balancing system.
- 8.Reliability and adaptability of the digital vehicle detection system.
- 9.The brake device ensures that the brake lever will not fall if it is parked under the brake bar, whether it is an approaching vehicle or a reversed vehicle.

### Functional Characteristics

- All-day vehicle detection rate is higher than 99.9%;
- Support multiple input interface configurations;
- Video compression technology H.264 is used for video coding, and capture frames are JPEG encoded;
- Built-in fill light; forced switching on the built-in fill light by segments;
- Support PC local recording;
- Support TF card storage;
- Supports three detection methods: coil detection, video detection, coil detection + video detection;
- Support OSD information overlay function, support video/picture overlay watermark;
- Support whitelist import and export function, you can do fuzzy matching on whitelist;
- Support remote client control functions, parameter configuration, video preview, remote upgrade;
- Support configuration file import backup;
- Support manual key reset, one key to restore initial IP address, user name, password and restore default factory configuration;
- Surge protection rating: 6KV;

### Technology Parameter

Sensor type	CMOS
Lens and focal length	Zoom 2.8 ~ 12mm
Exposure time	1/100 ~ 1/10000s
Image size	1080P, 720P, 4CIF, CIF
Compression standard	H.264/JPEG
Compressed output bit rate	384Kbps to 4Mbps
Maximum frame rate	Main stream 25FPS, sub-stream 25FPS
Image setting	Adjustable shutter, gain, brightness, etc.
Capture trigger type	Video, coil, video + coil
Output information	Vehicle big picture, vehicle small picture
OSD information overlay	Support, define time, location, etc.
Built-in fill light	Built-in LED fill light, adjustable brightness
One-button reset	Short press 2 seconds to restore the default IP, username and password ; Press and hold for 10 seconds to restore the default IP, username and password, factory configuration
Local video	Support PC local recording
The internet	1 RJ45 100M adaptive network interface
Communication	2 RS485 interfaces
Power supply	1 AC90~ 265V voltage interface
Input	2-way switch/level, 2-way switch input
Output	2-way switch output interface (relay)
Reset	1 reset button interface
Storage	1 TF card interface
USB	1 standard A type USB interface
Total power	Turn off the light < 4W, Turn on the light < 5W





# BW-TCXT9000

## •Prking Card Ticket System

### Parameters

Accessories Dimension	1070*340*280(mm)
Housing Material	Steel & Tempered glass
Housing Color	Varied
Support Built-in Reader	IC/ID/RFID, Barcode ticket
Com Mode	Rs485. Rear TCP/IP
Communication distance	1200m(RS485)
Data Transmission speed	4800bps/100m
Offline storage Capacity	10000pcs (Extensible)
Working Temperature	-30°C--70°C
Working Conditional	Indoor / Outdoor



# BW-TCXT9500

## •Prking Card Ticket System

### Parameters

Accessories Dimension	1070*340*280(mm)
Housing Material	Steel & Tempered glass
Housing Color	Varied
Support Built-in Reader	IC/ID/RFID, Barcode ticket
Com Mode	Rs485. Rear TCP/IP
Communication distance	1200m(RS485)
Data Transmission speed	4800bps/100m
Offline storage Capacity	10000pcs (Extensible)
Working Temperature	-30°C--70°C
Working Conditional	Indoor / Outdoor



# BW-TCXT10000

## •Prking Card Ticket System

### Parameters

Accessories Dimension	1070*340*280(mm)
Housing Material	Steel & Tempered glass
Housing Color	Varied
Support Built-in Reader	IC/ID/RFID, Barcode ticket
Com Mode	Rs485. Rear TCP/IP
Communication distance	1200m(RS485)
Data Transmission speed	4800bps/100m
Offline storage Capacity	10000pcs (Extensible)
Working Temperature	-30°C--70°C
Working Conditional	Indoor / Outdoor



### Product Description

Barcode Ticket/RFID Card parking Systemis mainly for parking lot of large traffic flow (such as large office building lot, public parking lot and shopping mall etc). This system is suitable for both temporary and monthly user parking lot. It adopts paper tickets for temporary user and it serves as the evidence of temporary user for in and out.

### Features :

- Multiple network modes to realize remote data and image transmission.
- 32-bit ARM dual-core processing technology.
- Easy to install, debug and maintain.
- IC, ID, bar code, RFID available in one control board.
- Nesting function available.
- Extensible long distance read function.
- Extensible plate-number identification and auto-printing.
- Multiple charging mode, charging standards can be defined by the user. Automatic card dispenser.
- Voice Notice Available.
- Flexible system configuration, can be extended to multi-levels parking lot management system.
- Waterproof, dust-proof and rust-proof case.
- Modular structure, fully integration.

# BW-YJL1800

## •Long Range RFID Reader

### Technology Parameter

Product name	rfid car parking system
Size	355*249*1035mm
Boom Length	6m (maximum, adjustable)
Boom to Ground	890mm
Boom Type	Straight, Folding, Fencing, Telescopic
Remote Distance	within 30m
Lift Time	3s / 6s
Voltage	AC220V 10% 50Hz
Motor Watt	140W
IP rating	Ip54



**Automatic license plate recognition system or RFID remote reading head, what are the advantages of each?**  
Automatic license plate recognition system and RFID remote reading head each have their own advantages, as follows

### Advantages of automatic license plate recognition system:

- 1.More flexible: The system does not require any physical contact with the vehicle, it only needs to scan the license plate through the camera for recognition, which can quickly identify the license plate and record the vehicle information.
- 2.Low cost: Compared with RFID remote reading head, the deployment and maintenance cost of this system is lower.
3. Wide range of application: The automatic license plate recognition system can be applied to various types of vehicles without additional equipment or preparation work.

### Advantages of RFID remote reading head:

- 1.More accurate: RFID technology can ensure that each tag has a unique identifier, can accurately identify each vehicle, and can read real-time information when the vehicle passes the reader.
- 2.More reliable: RFID technology is more reliable because RFID tags can be permanently attached to vehicles, while license plates can be replaced or lost.
3. More secure: RFID technology can encrypt label information to ensure that label information is not illegally obtained.

# BW-CWYD5500

## •Parking Guidance System

### Products Description



### A. System principle and workflow

Through the front-mounted ultrasonic detector, the parking situation of each parking space in the parking lot is collected in real time. The node controller collects the relevant information of each parking space detector in the parking lot according to the polling method, and feeds it back to the central controller. After analyzing and processing the parking information of the entire parking lot, it is sent to various signs and guide signs in the parking lot to provide information to guide vehicles to enter the relevant parking spaces. At the same time, the data is transmitted to the computer, and the computer stores the data in the database server, and the computer system provides a data query interface.

### B. System function

- 1.Parking guide, electronic map.
- 2.Automatic statistics and management of parking spaces.
- 3.Make statistics on the overall utilization rate of the parking lot according to the requirements.
- 4.System self-check.
- 5.The software is available in English.

### C. System composition and introduction

- 1.Front-mounted ultrasonic detector

The detector is an important part of the parking guidance system. It can collect parking information in real time, control the display of the parking indicator, and transmit the parking information to the node controller through the 485 network in time. The detector consists of a detector body, a detector base and a communication adapter board.

- 2.Node Controller

Node control plays an important role in ensuring the safety, reliability and efficiency of the system. The node controller cyclically detects the status of the connected detectors and transmits relevant information to the central controller.

The node controller is used to connect the central controller and parking detectors, display screens, guidance arrows, etc.

The node controller mainly solves the problem of unreliable long-distance communication, the problem of the expansion of the number of network parking spaces, and the problem of group management. One node controller is recommended to control 60 parking space detectors.

- 3.Central Controller

The central controller is the core of the entire system, mainly responsible for the collection and control of the entire intelligent parking guidance system, and realizes the guidance function of the vehicle by updating the real-time data of the parking guidance screen. A central controller can control up to 62 node controllers.

- 4.Outdoor guide large screen

The large outdoor guide screen is used to display the remaining parking space information of each functional area in the parking lot. The display screen is composed of high-brightness LED module, drive circuit, control circuit, bracket and other parts. It receives the output information of the central controller, displays the number of free parking spaces in the parking lot with numbers in real time, and prompts the driver of the vehicle who is ready to enter the venue. It can be used 24 hours a day.

- 5.Indoor guide screen

It is recommended to install indoor guide screens at important junctions inside the parking lot. The guide screens are composed of indoor high-brightness LED modules, drive circuits, and brackets. It receives the output information of the central controller, displays the parking position in the form of numbers, arrows, etc., and guides the driver to quickly find the empty parking spaces allocated by the system. Ensure the smooth flow of the parking lot and make full use of parking spaces.

### D. Detector installation instructions

- 1.Detector installation position: installed above the parking space line at the entrance of the parking space (non-intersecting wheel end), and fixed with a bridge.
  - 2.Detector installation height: 2.0m-3m from the ground (recommended 2.5m), close to the end of the lane, within 0-1m from the parking space line (recommended 0.3-0.5m)
- Note: It cannot be installed directly under the fluorescent lamp, and the horizontal distance from the fluorescent lamp is greater than 20cm, but it must meet the requirements that the driver can see the status of the detector indicator at a distance of 30m from the parking space along the lane, and cannot be blocked by objects such as pillars.
- 3.The orientation of the sensor after installation: the two sensors are facing the direction of the parking space, and the left and right deviation angle cannot exceed 5% to ensure that the detector is vertically fixed under the bridge.

### E. Equipment placement principle

- 1.The central controller is generally installed in the central control room.
- 2.The node controller is generally mounted on the wall and mounted on the column, in the middle of each group of detectors.
- 3.Indoor guide screens are generally placed at the bifurcation of each lane:

## ■Parking Bollard and Blocker Series

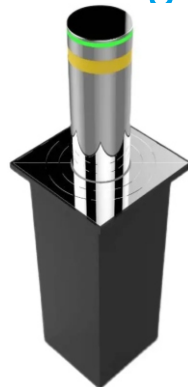
# BW-SJZ1800

## • Rising Bollard



# BW-SJZ1900

## • Rising Bollard



### Product Application

The rising bollards system is designed to bring convenience and enhancements to higher-level security. It is an ideal choice for universities, pedestrian sidewalks, parking lots, government buildings, gyms, amusement parks, airports, shopping centers, hospitals, and occasions with high traffic flow.

Our Hydraulic Bollard Road Blockers can be used to control vehicles in either one-way or two-way configurations and are specifically designed to interface with our extensive range of access control security systems, remote manned operation, or open/close vehicle loop detectors. The 'red' traffic light is illuminated while the Hydraulic Bollard is in its active position. The green light is only being illuminated once the Hydraulic Bollard is fully retracted. As the vehicle passes on to the safety/closing induction loop, the light will change to red signaling the next vehicle to stop. The Hydraulic Bollard can be lowered manually in the event of a power failure. Furthermore, the Hydraulic Bollard can operate with a comprehensive range of cabinet-mounted key switches for Emergency Service or site-specific operational requirements.



### Product Advantages

This is new designed electric-hydraulic operated retractable bollard for roadblock management.  
The system can be quickly and easily operated, suitable for both security and access control applications.

### Main Features

1. Anti-collision: It can be used normally after being hit by a 12-ton vehicle.
2. Anti-destructive power: After being hit by a 16-ton vehicle, Hydraulic road bollards deformation.
3. Internal structure: With load-bearing steel beam and column, anti-collision steel beam-column, 4 navigation rods.
4. Can be manually lowered in the event of a power outage.
5. Linkage interface.
6. Reversible operation according to requirements during ascent and descent.
7. Noise during operation of the device≤60 dB.
8. Waterproof integrated hydraulic drive.
9. Control solenoid valve 24V.
10. Control box display text adjustable (up, down, start, time control adjustment).
11. Display text in English.
12. Water immersion performance: no leakage during 48 hours and normal lifting.
13. Anti-corrosion performance level: 9. Technical Parameters

### Specifications:

Material	304stainless steel
Operate mode	Fully automatic    Semiautomatic    Fixed bollard
Power supply	110V/220V/(control voltage 36V)
Column diameter	168mm±2mm(OEM: 133mm,219mm, 273mm)
travel height	6mm±2
Waterproof degree	Ip68
Surface	Drawing process
Operating Temperature	-30℃ to +70℃
Control model	push button/card reader/remote control/loop detector    Manual/semi-auto
Running speed	2-4S ( ascending )
Safety signs	Reflective tape/LED warning light zipper/loop detector system traffic lights
Cylinder	Stainless steel/plastic coating for steel tube Traffic Road Bollard,automatic bollards,cast iron road stake bollards
Optional Function	Traffic Lamp/Solar light/Hand Pump/Safety Photocell, Reflective tape/sticker, buzzer
Optional Color	Brushed titanium gold, champagne, rose gold, Brown, red, purple,sapphire blue, gold, dark blue paint, chocolate,stainless steel,Chinese red paint

## BW-SJZJX

### ● Rising Bollard Mechanism

#### Bollard actuator details:

- 1.Product specs

Minimum height 1075mm  
Linear thrust 1500N(150KG)  
Down time 1.5s (no loading)  
Weight 18.5kg
- 2.Motor specs.

Voltage AC220V  
Motor Power 350W  
Motor reversal Yes
3. Cylinder spec:

Inner diameter 20mm  
Stroke 600mm
- 4.Pump

Displacement 1.5cc/ rev
- Stroke 600mm  
Up Time 3.5 s (no loading)  
Waterproof level Ip67  
Reverse

Electric current 3A  
Motor speed 2800 rev /min

Rod diameter 16mm

Pressure 50 bar



### Control System

1. The control system is a multi-functional integrated digital programming system independently developed by our company. One controller can control 1-8 lifting columns at the same time. It can also be controlled separately. 1.3.5 Lift, 2.4.6 does not move. Or 1.2. 3 lifting. 4.5.6 does not move. There are 3 working mode controllers (this function is the first in the industry). Specifications: 400x300x140 (depending on the quantity) 7.5KG
2. Reserved with card reader open and ground sense detection signal interface, can be compatible with any opening signal. Working voltage 220v. Control voltage 24V. Separate installation with ground column.
3. Power failure emergency: built-in reserve battery, remote control cylinder can be lowered once after power failure.
4. One system can control 8sets bollards

## BW-SJZZB

### ● Rising Bollard Control Board

#### Control board parameter setting:

After the control board is powered on, the LED screen displays the software version and then displays the time after about 1 second.

#### A. System menu description:

1. "F 0 1":The rising and falling limit time of No. 1 lifting column motor. Use the "up" and "down" keys to increase or decrease the time respectively, and the time can be set to 0.1-9.9 seconds. (The factory default is 4 seconds (value 40), 40\*100ms=1000ms)
2. "F 0 2":The lifting and lowering limit time of No. 2 lifting column motor. Use the "up" and "down" keys to increase or decrease the time respectively, and the time can be set to 0.1-9.9 seconds. (The factory default is 4 seconds (value 40), 40\*100ms=1000ms)
3. "F 0 3":No. 3 lifting column motor rising and falling limit time. Use the "up" and "down" keys to increase or decrease the time respectively, and the time can be set to 0.1-9.9 seconds. (The factory default is 4 seconds (value 40), 40\*100ms=1000ms)
4. "F 0 4":The up and down limit time of the 4th lifting column motor. Use the "up" and "down" keys to increase or decrease the time respectively, and the time can be set to 0.1-9.9 seconds. (The factory default is 4 seconds (value 40), 40\*100ms=1000ms)
5. "F 0 5":No. 5 lifting column motor rising and falling limit time. Use the "up" and "down" keys to increase or decrease the time respectively, and the time can be set to 0.1-9.9 seconds. (The factory default is 4 seconds (value 40), 40\*100ms=1000ms)
6. "F 0 6":No. 6 lifting column motor rising and falling limit time. Use the "up" and "down" keys to increase or decrease the time respectively, and the time can be set to 0.1-9.9 seconds. (The factory default is 4 seconds (value 40), 40\*100ms=1000ms)
7. "F 0 7":No. 7 lifting column motor rising and falling limit time. Use the "up" and "down" keys to increase or decrease the time respectively, and the time can be set to 0.1-9.9 seconds. (The factory default is 4 seconds (value 40), 40\*100ms=1000ms)
8. "F 0 8":No. 8 lifting column motor rising and falling limit time. Use the "up" and "down" keys to increase or decrease the time respectively, and the time can be set to 0.1-9.9 seconds. (The factory default is 4 seconds (value 40), 40\*100ms=1000ms)
9. "F 0 9":Remote control combination control mode. Use the "up" and "down" keys to set:0 means that the remote control turns on and independently controls the lifting column motor mode. After each row of keys on the remote control is turned on the corresponding first channel, after the lifting column motor stops working, press the remote control corresponding to each row key and then turn on the second channel of lifting Column motor.
  - (1) is the standard mode of one-on-two remote control. Each row of keys on the remote control turns on the first and second lifting column motors respectively.
  - (2) is the one-on-four mode of the remote control. The second row of keys on the remote control turns on the first to fourth lifting column motors, and the fourth row of keys on the remote control turns on the fourth to eighth lifting column motors.
  - (3) is the one-on-eight mode of the remote control. The fourth row of keys on the remote control turns on the first to eighth lifting column motors respectively. (The factory default is 1)
10. "F 10":LED working mode + LED blinking frequency. Use the "up" and "down" keys to increase or decrease the light flashing frequency respectively, which can be set to 1-10 parameter values. (The factory default is working mode 1, flashing frequency 2)
11. "F 11":485 communication IP address. Use the "up" and "down" keys to increase or decrease respectively, which can be set to 1-99 parameter values. (The factory default is 1)
12. "F 12":Repeated opening and closing tests are mainly used to test the stability and aging test of the gate control board. The digital tube displays C-5. C-5: In the test mode, press the set key to exit the test
13. "F 13":time setting.Press the menu button to enter the time, hour and minute settings, and finally press the menu button to save and return.
14. "F 14":LED timing switch function. Turn off the light forcibly when OFF, turn on the light forcibly when ON, turn on and off the light at the time of ONC, press the menu button to enter the time, hour, and minute setting of the time, hour, and minute when it is ONC, and finally press the menu button to save return. (The default is ON to force the light on)
15. "F 15":Timing rising pressure setting. When OFF, turn off the function of timing increase and increase, and turn on the function of timing increase. Pressure function. Default (open the timing increase pressure function), press the menu button to enter the pressure time setting when it is ON (0.1 seconds-9 seconds, the default (open 1.5 seconds)), and then press the menu button to enter the hour of the timing increase pressure time Set, finally press the menu button to save and return. Default (7:00, no setting for minutes)



- 16. "F 16":The timing time (period) setting of cyclic timing pressurization. Can be set to 0-99 gears, the division is 10 minutes (factory default is 0 gears), 0 means the pressure is not regularly applied, 1-99 means the pressure is applied every 10 minutes\* (1-99), the maximum is 16.5 Hour. The pressurization execution time defaults to 1.5 seconds, and the pressurization execution time can be set in the first option in the F15 option.
- 17. "F 17":The sense of earth triggers the rising time of court time. Use the "up" and "down" keys to increase or decrease the rise time of the ground trigger time, which can be set as a parameter value of 0-99. (The factory default is working mode 10, 1 second, that is, ground sense 1 or ground sense 2 will rise after 1 second after the trigger signal disappears)
- 18. "F 18":Check the software version number and restore factory settings. Display C---hour mode, press the stop button to exit and restore factory settings.Press the menu button to restore the factory settings, and all the main board parameters are restored to the factory settings.
- 19. "F 1 9":Exit the menu. Or automatically exit without key operation within 5S

## BW-KZQ900

### • Rising Bollard Control Box



#### Product Application

The rising bollards system is designed to bring convenience and enhancements to higher-level security. It is an ideal choice for universities, pedestrian sidewalks, parking lots, government buildings, gyms, amusement parks, airports, shopping centers, hospitals, and occasions with high traffic flow.

Our Hydraulic Bollard Road Blockers can be used to control vehicles in either one-way or two-way configurations and are specifically designed to interface with our extensive range of access control security systems, remote manned operation, or open/close vehicle loop detectors.

The 'red' traffic light is illuminated while the Hydraulic Bollard is in its active position.

The green light is only being illuminated once the Hydraulic Bollard is fully retracted.

As the vehicle passes on to the safety/closing induction loop, the light will change to red signaling the next vehicle to stop.

The Hydraulic Bollard can be lowered manually in the event of a power failure. Furthermore, the Hydraulic Bollard can operate with a comprehensive range of cabinet-mounted key switches for Emergency Service or site-specific operational requirements.

#### Product Advantages

This is new designed electric-hydraulic operated retractable bollard for roadblock management.

The system can be quickly and easily operated, suitable for both security and access control applications.

#### Main Features

1. Anti-collision: It can be used normally after being hit by a 12-ton vehicle.
2. Anti-destructive power: After being hit by a 16-ton vehicle, Hydraulic road bollards deformation.
3. Internal structure: With load-bearing steel beam and column, anti-collision steel beam-column, 4 navigation rods.
4. Can be manually lowered in the event of a power outage.
5. Linkage interface.
6. Reversible operation according to requirements during ascent and descent.
7. Noise during operation of the device≤60 dB.
8. Waterproof integrated hydraulic drive.
9. Control solenoid valve 24V.
10. Control box display text adjustable (up, down, start, time control adjustment).
11. Display text in English.
12. Water immersion performance: no leakage during 48 hours and normal lifting.
13. Anti-corrosion performance level: 9. Technical Parameters

## BW-PTQ350

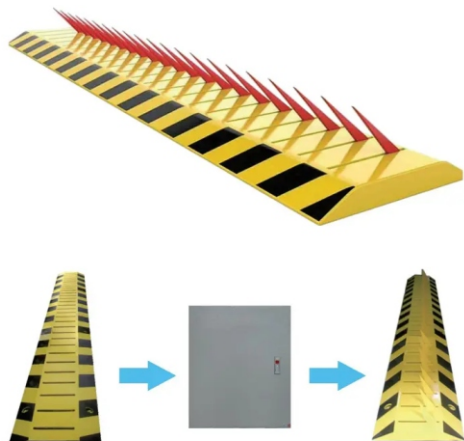
### • Tire Killer

#### Advantages:

- 1.High resistance to wear
- 2.It has strong pressure resistance
- 3.Service life is ten times rubber deceleration cushion
- 4.Can reach more than 15 years
- 5.Have anti-theft function
- 6.Can prevent traffic accidents

#### Applications:

Applications for school, factory, vilage, station, airport and parking lot, etc.



#### Specifications:

Working principle	Electromechanical
Dimensions	L 15000mm*W 500mm*H 360mm, interception width: 3000mm
Materia	A3 steel, panel thickness 16mm
Thickness of broken tire blade	10mm
Rising height of broken tire blade	150mm
Carrying weight	80 tons
Anti-collision level	K12
Dustproof and waterproof grade	Ip68
Rise/fall time	1 second
Power supply mode	220v power, 150W
Lifting control	Short-range wireless remote control/wire control, control distance ≤30M
Surface treatment	Spray paint on reflective paper
Color	stainless steel
Working environment	-40℃ ~ +70℃



BW-LZD330

• Speed Hump



Technology Parameter

Size (L*W*H)	1000*475*45 (mm)
Material	Steel
Knife height	90 mm
Knife quantity	9 nos
Surface finish	Powder coating
Color	Yellow
Controlled	Spring
Blocking way	One way

Description

Rubber speed bump is based on a car driving principle of the design of the Angle of special rubber tire and ground, with a special rubber.Is a set in highway crossing, industrial and mining enterprises, schools, residential area such as the entrance for deceleration motor vehicles, non-motor vehicles speed of new transport special security Settings.

Features:

- 1.Material is high intensity rubber.
2. Color Lasting: No fade within 2 year.
3. Good quality could Anti-crash, Anti-UV, Anti-hot, Anti-Cold.
4. Rubber Speed Bump can lower vehicle's speed when the cars pass by.
- 5.In the daytime, its warning color, yellow and black eye-catching.
6. Installed with a light reflection that can reflect some bright light in the evening, which can attract drivers' attention and enhance the security.
- 7.specialized designed,notable decelerate effect,without noise and uncomfoetable feeling.
- 8.black an yellow,affect in day and night,attack the attention of the drivers to decelerate successful

BW-LZ1300

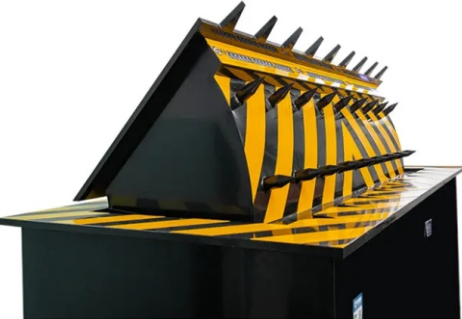
• Road Blocker

Technology Parameter

Protection level	Ip68
Product name	Automatic hydraulic Road Blocker
Running mode	Hydraulic drive
Material	High strength steel
Colour	Yellow and black (customized)
Running time	3-6s (adjustable)
Bearing weight	60T
Control method	Remote control
Power supply voltage	380V/220V linkage control
Keyword	Parking lot car stop road blocker
Main steel plate thickness	16mm (Customized)
Surface treatment	Anti-rust painting finished
Safety signs	Reflective tape/LED warning light zipper/loop detector system traffic lights
OEM / ODM	Support

Advantages:

- 1.High resistance to wear
- 2.It has strong pressure resistance
- 3.Service life is ten times rubber deceleration cushion
- 4.Can reach more than 15 years
- 5.Have anti-theft function
- 6.Can prevent traffic accidents



BW-LZS50

• Rubber Speed Bump

Technology Parameter

Material	Rubber
End Weight	1.5KGS/PC
End Size(L*W*H)	175*350*45MM
Middle Part Weight	14/14.5KGS/M
Middle Part Size(L*W*H)	500*350*45/50MM
Characteristics	1.The Rubber Speed Hump can lower vehicle's speed when the pass by, but at the same time the driver have no feeling of being hit. 2. In the daytime, its warning color which is yellow and black is eye-catching. 3. The hump is installed with a reflection that can reflect the bright in the evening, which can attract drivers' attention and to enhance the .

Features:

- 1、Molded from recycled rubber tough, durable rubber material.
- 2、Available in black and yellow colours, the yellow is not painted on but yellow rubber compound comressed to the Bump.
- 3、Effective speed reduction.
- 4、Easily installed.
- 5、Contrasting colours and reflectors for visibility day & night.
- 6、Surface tread ensures grip even when wet.
- 7、Easily adjusted to site conditions.
- 8、Highly suitable for permanent & temporary installations.
- 9、Suitable for HGV's



# Face Recognition System Series

## BW-RL800

- Face Recognition



## BW-RL900

- Face Recognition



### Technology Parameter

Screen	7 inch capacitive touch screen
key	Touch virtual key
Operating system	LINUX 3.10
CPU	J8205 AI Dual-core processor 1.2T
Running memory RAM	1G DDR3
Memory space ROM	4G
Binocular camera	100W pixel HD color camera 100W infrared signature camera
Recording capacity	100,000 pieces
Registration method	Local operation: face registration, photo U disk import Software operation: photo import registration, camera registration
Verification and comparison	Dynamic face recognition, password, ID/IC Dual-band swipe card
Face storage	2000
Card storage	2000
Password storage	2000
Identification distance	0.3 ~ 3m
Communication network	TCP/IP
Background management software	Supports computer software to manage data through a network connection to the device
Attendance report	Export attendance statistics report from USB flash drive
Professional access control	Open door alarm, forced door opening alarm, a set of door opening signals, external access reader, Weigen 26/34 output

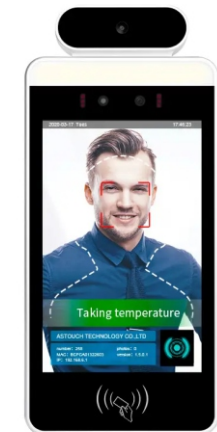
## BW-RL1500

- Face Recognition



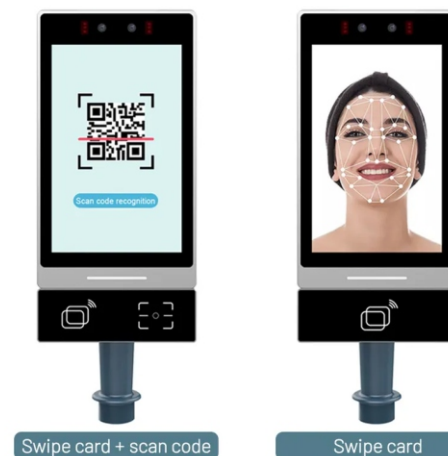
## BW-RL1700

- Face Recognition



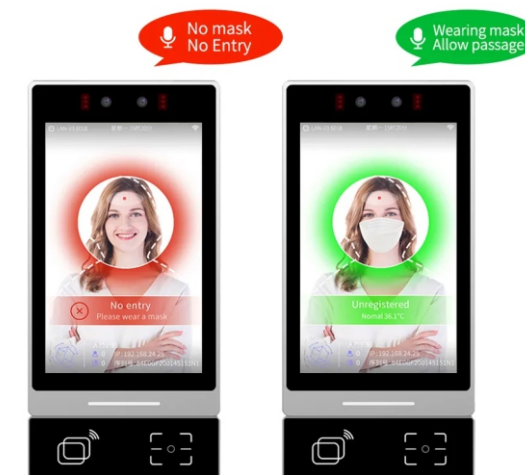
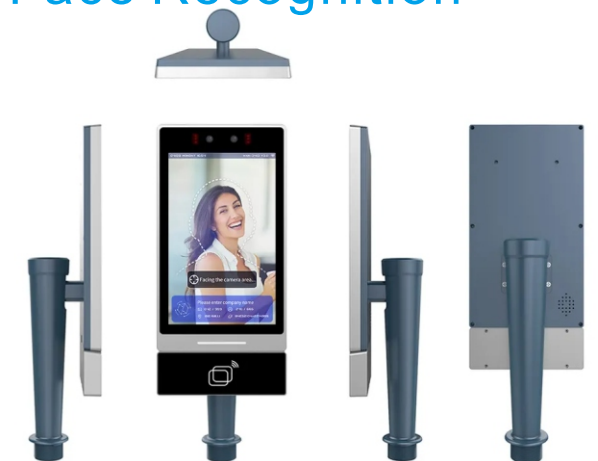
## BW-RL2200

- Face Recognition



## BW-RL2300

- Face Recognition







#### Technology Parameter

Operating system	Rk3568 Android 11 with Octa-core 2Ghz CPU, GPU support
Memory	2GB(optional 4GB) RAM and 16GB(optional 32GB/64GB) ROM
Screen	8 inch IPS screen with 1200*800 resolution, optional touch screen
Face capacity	20,000 standard
Log capacity	1,000,000(auto override)
Detecting distance	0.5-4 meters, adjustable
Cameras	RGB camera(200W) & Infrared camera(130W)
Face mask	Yes, could reminder users to wear a face mask
Temperature module	Japanese brand, temperature accuracy 0.3 degree
Interface support	RS232/RS485;
	HDMI 2.0
	Wiegand 26/34/37 input/output
	2 Alarm inputs
	Reset
	1 USB 2.0 + 1 USB OTG
	DS charger port
Communication	Relay port: COM, NO, and NC
	TCP/IP, WIFI
Card reader	Optional built-in 13.56mhz IC card reader/ Barcode Scanner
API/SDK	API document free, include cloud and LAN
Software	Optional LAN software ready( English version)

## BW-RLST

### • Face Recognition Stand



# Fingerprint Time Attendance Series

## BW-KQJ150

### Fingerprint Time Attendance

#### Technology Parameter

Type	Inductive Card (IC/ID/Radio Frequency Card) Type, Multifunctional, ID Card, Fingerprint Type
Product Name	Time Attendance Machine
Operating Voltage	5v/1A
Display Screen	2.4" TFT color screen
User Capacity	1,000 fingerprints
Communication Way	Support U disk data download
Recognition Way	Fingerprint, password
Identification Speed	≤0.8s
Identify Pattern	1:1, 1:N
Size	170*115*40mm
Weight	220g

#### Features:

- High-speed smart chip, 0.8 seconds fast check-in;
- Software-free self-service attendance;
- Simple setup;
- 1000 fingerprints, can bring cards;
- 60,000 attendance records;
- Fingerprint time attendance, password time attendance.

### No need the software

Reports generated automatically ,downloaded by U-disk . Much Easier, More Efficient

More intelligent, More Flexible, More Efficient

Software Free

U Disk  
(Download the Date)  
PC( check the attendance date by excel)

### Fingerprint Time Attendance

## BW-KQJ180

## BW-KQJ200



#### Technology Parameter

Type	Inductive Card (IC/ID/Radio Frequency Card) Type, Multifunctional, ID Card, Fingerprint Type
Product Name	Time Attendance Machine
Operating Voltage	12v/1A
Display Screen	2.4 Inch TFT color screen
User Capacity	1,000 fingerprints
Communication Way	Support U disk data download
Recognition Way	Fingerprint, password
Identification Speed	≤0.8s
Identify Pattern	1:1, 1:N
Size	105*105*26mm
Weight	166g

#### Features:

- High-speed smart chip, 0.8 seconds fast check-in;
- Software-free self-service attendance;
- Simple setup;
- 1000 fingerprints, can bring cards;
- 1001 60,000 attendance records;
- 1002 Fingerprint time attendance, password time attendance.





# ■ Parking Lock Series

## BW-CWG125

- Alkaline Battery Parking Lock

Specifications:

Item	Value
Product Name	Alkaline Battery Car Parking Lock
Certification	CE ROHS FCC
Battery Type	Security Car Parking Position Lock
Dimension	33*46*40cm
Accessory	Alkaline Battery, Lithium Battery, Lead-acid Bttery (optional)
Operation	Remote control
Remote controller	2pcs
Key	2pcs
Voltage	DC12V
Running time	4~6s
Extended Height	400mm
Weight	7.5KG(G.W)/7KG(N.W)
Application	For car position access control
Remote Control Distance	15m
Warranty	12 months



## BW-CWG200

- Alkaline Battery Parking Lock

Specifications:

Item	Value
Model Number	Alkaline Battery Car Lock
Certification	CE ROHS FCC
Product Name	Security Car Parking Position Lock
Dimension	33*46*40cm
Accessory	Built-in battery
Operation	Remote control
Remote controller	2pcs
Key	2pcs
Voltage	DC12V
Running time	4~6s
Extended Height	400mm
Weight	7.5KG(G.W)/7KG(N.W)
Application	For car position access control
Remote Control Distance	15m
Warranty	12 months



## BW-CL180

- Lithium Battery Parking Lock

Specifications:

Item	Value
Model Number	Lithium Battery Car Lock
Certification	CE ROHS FCC
Product Name	Security Car Parking Position Lock
Dimension	64.8*16*31cm
Accessory	Built-in battery
Operation	Remote control
Remote controller	2pcs
Key	2pcs
Voltage	DC12V
Running time	4~6s
Extended Height	400mm
Weight	9KG(G.W)/8.4KG(N.W)
Application	For car position access control
Remote Control Distance	15m
Warranty	12 months



## BW-CS50

- Manul Parking Lock



Specifications:

Product Name	Octagonal Parking Lock
Loading Capacity	5T/ 7T/ 10T
Material	Cold Rolled Steel
Operation	Hand-operated
Style	Octagonal
Feature	Strong Durable,Easy operate,Parking Slot Management for parking lot
Keywords	Manual parking lock, Manual parking barrier,Manual parking blocker

# BW-CS65

## • Manul Parking Lock



### Specifications:

Products	Manual Control Anti-theft Steel Car Parking Lock
Material	Steel
Lifting height	300mm
Descending height	50mm
Operating control type	Manual
Type	A type triangle
Color	Yellow/Orange
Spray	Baking finish
Weight	2.5~6KGS
Environment Temperature	-30℃~+75℃

# BW-CS220

## • Solor Parking Lock



### Specifications:

Item	Value
Model Number	Solar Power Car Lock
Certification	CE ROHS FCC
Product Name	Security Car Parking Position Lock
Dimension	33*46*40cm
Accessory	Built-in battery
Operation	Remote control
Remote controller	2pcs
Key	2pcs
Voltage	DC12V
Running time	4~6s
Extended Height	400mm
Weight	9KG(G.W)/8.4KG(N.W)
Application	For car position access control
Remote Control Distance	15m
Warranty	12 months

### Application:

For car parking lot both indoor or outdoor.

### About car parking lock:

Parking lock is the new developed product. The case of the parking lock is coated with high-class varnishing with glossy color. It has nice appearance with practical structure design, user-friendly, diversified functions, safe and durable operation features. It is applied for car parking management in occasions such as high-end residences, shopping malls, hotels, airports and other commercial places.

### Customer service:

1. All items have 12 month quality guarantee.
2. Custom design shape and logo, for large amount, custom logo available for free.
3. Supported by professional engineers.
4. Special discount of our distributors or agents in their area.
5. Packing in standard export carton, suggest you pack it by wooden case to protect the products
6. CE, ROHS available.

**For special item, or need custom design package or logo, need 3-10 working days longer**

# ■ Sliding Gate and Folding Door Series

# BW-SSM600

## • Retractable Entrance Gate

### Technical Parameter

Open Style	Retractable
Opening Pattern	Automatic
Product name	Automatic Motorized Driveway Retractable Folding Slide Gate
Surface treatment	Powder coating finish
Color	Silvery or customized
Material	201SS (304SS optional) or aluminum alloy
Collission avoidance system	Stops or falls back when it is 20-50cm away from obstacle parameter
Standard size	L 10000 X W860 X H 1800mm
Alarm function	It will works while some one is climbing it or open it with force
Display screen	It can be input about 500 English words at last
Control device	Wireless control box and remote control
Application	Hotel, government, company, factory, industrial, mining enterprise

### Advantages

- 1, Gate Motor Overheating Protection: The motor will automatically power off and enter into protection status when the temperature reach some degree, and it will work normally again after the temperature turn low.
- 2, Speed Clutch: When the power cut off, only use the clutch key rotating 180 degree then the clutch will keep apart, and now the Electric Folding Gate can be manually controlled.
- 3, Infrared Anti-Collision Device: If there is pedestrian or vehicle passing during working process, the Electric Folding Gate will automatically stop 30cm or 40cm away to avoid collision.
- 4, Anti-Climb Alarm: If there is anyone climbing over the Electric Folding Gate, it will alarm automatically (Optional).
- 5, Remote Control: It's very easy to control the gate for opening / closing / stopping if control distance is less than 50m.
- 6, Drive and Driven Wheels: With die-casting Al-alloy material for drive and driven wheels and imported rubber to make the system with wearing resistance, noise free and long service life.
- 7, Machine Head: The professional motor of Electric Folding gate and thickening base board increase its weight and traction. The four wheel drive and chain driven make the system buffering and smooth start and stop. The head is also double sealed in whole to prevent dust and humidity to prolong its life.
- 8, Gate materials: The Electric Folding gate is with high strength electro-phoresis Al-alloy to assure of strong quality in hardness, anticorrosion and anti-collision, also to maintain its charm color without fading away.
- 9, Electric Folding Gate vice part material is with high strength Al-alloy and the hole is punching pressed by professional ironware mould with PA wear sets, everyone of which also includes stainless steel pad to avoid friction or noise. Door-Axis core material is  $\phi 16 \times 1.0$ mm pure stainless steel with black plastic tube outside to make it beautiful but practical
- 10, All plastic spare parts of the Electric Folding gate are imported materials to ensure its long durability (used life upon 10 years)
- 11, Display Screen: There are fixed 8 digits display LED screen or rolling digital screen with 500 digits available for choice ( standard for 8 digits LED screen)

### Features

1. Sliding on the plan ground, No need pre-lay gate track on the ground
2. Adopts casting aluminum and imported rubber wheels without abrasion in long time using
3. Gate length is customized according to the real project
4. Gate motor and control board are built in gate box
5. LED Screen is available for customized LOGO and text
6. Simple installation, no need embedded track on the ground
7. The remote control distance is up to 30 meters without any obstacles
8. The gate is widely used in the main entrance of factory, school, garden, resident etc.



### Installation Projects

Application of retractable sliding gate: outdoor, front door entrance gate, government, company, factory, industrial, mining enterprises, public place, school, shopping mall, residence, hotel, hospital, parking lot, etc.



## BW-KMQ300

### Automatic Sliding Gate Opener Motor

#### Technical Parameter

Application	Villa sliding gate
Design Style	Modern
Feature	soft start and soft stop
Frequency	433.92MHZ
Type	Sliding gate motor rack driving type
Product name	230V 2600KGS Motor Rack Drive Automatic Sliding Gate Opener Motor
Type	rack driving type
Input	AC220-240V/50Hz, 110V-130V/60Hz
Power	1000W motor rack driven gate opener
Speed	20cm/sec
Max. gate weight	5700lbs (2600KGS)
Gear	steel gear
Motor	24V DC
Material	metal, plastic
Frequency	433.92MHZ
Temperature	-22°C - +55°C (-4°F to 122°F)



## EAS Security Scanner Series

### BW-AJM1800

#### Walk Through Security Metal Detector

##### Technology Parameter

Frequency	4-8 KHz
Sensitivity	0-255 Individually Programmable
Detection	Ferrous/Non-ferrous/Ferrite/Alloys
Technology	Digital Signal Processing
Circuitary	Auto Calibration and Diagnostics
No. of Zones	Single
Alarm of Detection	Audio & Visual display of zone intercepted
False Alarm rate	< 3%
Arch Dimension	2230 x 800 x 500 mm (+/- 10%)

##### Product Introduction

The designed for ordinary security door users.

- 1.It is economical, practical and inexpensive, mainly match moderate detection requirement places such as nightclubs.
- 2.With body height detection design and built in electromagnetic fields, metal items carried by human can be generated through the alarm device, items like various control tools, weapons, metal products, electronic products and other items containing metal and so on.
- 3.As an antitheft examination an effective tool, mainly used in government agencies, public security organs , prosecution, courts, prisoners, detention centers, customs, airports, stations, stadiums, convention venues, entertainment, large gathering places, as, etc. Well as hardware, electronics, jewelry, military, Mint factories or businesses.
- 4.Detect the regions without blind spots uniformly
- 5.Sound and light simultaneously alarm
- 6.Panel LED light: Show the targets locations precisely
- 7.Modular design: convenient installation and easy to rule out failure.
- 8.Self-diagnosis functions: built-in self-diagnostic procedures, power-on self test
- 9.Microprocessor technology: more flexible control , the control panel can program all the parameters default to match the users' requirements
- 10.Complex circuit design, infrared devices, computer automatic identification, can effectively reduce false positions and omissions



# BW-AJJ42000

• X-Ray Cargo Scanner

Technology Parameter

Channel size	505*305mm(W*H)
Housing size	1600 mm(L) * 800mm(W)*1200mm(H)
Belt speed	0.22 M/S
Belt load	120 kg (uniform load)
Penetration	> 10 mm steel plate
Line resolution	> 38 AWG
Spatial resolution	Horizontal / vertical 1.0mm
Tube voltage	80 KV
Tube current	0.6 MA
Noise level	< 58 dB (A)
Power consumption	0.4 KW (MAX)
Power supply	AC220V ± 10%, 60Hz ± 5Hz
Cooling mode	Sealed oil cooling, industrial fan heat dissipation
Duty cycle	100%, without preheating
Protection function	Over voltage, over current and over temperature protection



# BW-AJJ45000

• X-Ray Cargo Scanner

Technology Parameter

Channel size	505*305mm(W*H)
Housing size	1600 mm(L) * 800mm(W)*1200mm(H)
Belt speed	0.22 M/S
Belt load	120 kg (uniform load)
Penetration	> 10 mm steel plate
Line resolution	> 38 AWG
Spatial resolution	Horizontal / vertical 1.0mm
Tube voltage	80 KV
Tube current	0.6 MA
Noise level	< 58 dB (A)
Power consumption	0.4 KW (MAX)
Power supply	AC220V ± 10%, 60Hz ± 5Hz
Cooling mode	Sealed oil cooling, industrial fan heat dissipation
Duty cycle	100%, without preheating
Protection function	Over voltage, over current and over temperature protection



# BW-AJJ48000

• X-Ray Cargo Scanner



Technology Parameter

Type	Single Energy X-ray Inspection System
Tunnel size	500(W)*300(H)mm
Conveyor max. load	150 kgs(331 lbs)
Steel penetration	10 mm typical
Wire resolution	40 AWG(0.0787 mm) typical
X-ray protection	<1.0 μGy / h
Power supply	240VAC (-10%~ +20%),50/60±3Hz
Application	Hotel, executive offices, public places, etc.

The BW-XRCS03 X-Ray inspection system enhances the operator's ability to identify potential threats. The device is designed to inspect briefcases, hand luggage, and small packages. It is used for strict security controls such as prisons, courts, factories, banks, customs, hotels, warehouses and airports.

Main features:

- It is powered by 220V AC.
- Point out the objects with high density in baggage.
- Includes screen, keyboard and mouse.
- Ideal for small luggage.
- Supports up to 150 kg.
- Easy to operate.
- It integrates free software with tools that make it easy to identify dangerous objects in an X-scan.
- You only need to assemble its accessories (already included), connect to the electrical network and it will be ready to start scanning luggage (Plug and play).



# BW-SJAJ50

## • Hand-Held Metal Detectors

Technology Parameter

Measuring range	50mm
Detect metal size	A paper clip
Alarm mode	Sound/vibration
Type	handheld
Power supply	9V Battery
Usage	Security Inspection
Scope of application	School district factory security
Weight	300g
Material	ABS



Description

It is simple and convenient to use without adjustment. There are two options of high and low sensitivity. The alarm mode includes sound and vibration. It has the function of startup, shutdown sound or vibration prompt. When the battery runs out, there is automatic continuous sound or vibration alarm, and there is an external charging jack

Test distance of metal articles: pin 10mm, 1 yuan coin 60mm, 6-inch wrench 120mm

Startup detection:

Turn on the power switch and hear the "click" sound for about 3-5 seconds, indicating that the power has been connected, the self-test time is completed and can be used normally, At the same time, the green light is on. If the green light is not on, it indicates that the battery is not installed or the battery is in poor contact; If the continuous sound, vibration or barking is not stopped, it means that the battery can not be used again, and the battery should be replaced

Sound and vibration change-over switch selection:

Press the yellow button switch, and the alarm mode is vibration. Release the yellow button switch, and the alarm mode is sound

High sensitivity test:

After the power is turned on, the high-sensitivity detection can be carried out. Hold the handle and sweep the detection surface around the tested object. When there are metal objects, the alarm sound or vibration will be sent out, and the green light will turn into red light; Stop detection and scanning, stop the alarm sound or vibration, and the red light turns green.

Low sensitivity test:

If you need to eliminate the small objects in the metal objects, you can press and hold the low sensitivity switch to probe and scan around the measured objects. When there are metal objects, the alarm sound or vibration will be sent out, and the green light will turn into red light; When the detection and scanning are stopped, the alarm sound or vibration will stop, and the red light will change to green light. Because the sensitivity is reduced by more than 5 times, the measured metal objects are generally large.

Sensitivity adjustment:

If the detection distance fails to meet the specified requirements or the sensitivity is too high to cause instability or sound or vibration without metal detection and scanning on the human body, the sensitivity shall be adjusted. Put the sound and vibration change-over switch in the "release" state, use a small slotted screwdriver to extend into the small hole on the handle of the detector, rotate counterclockwise to make sound, then rotate counterclockwise to make no sound, and then rotate clockwise for half a circle, Until the sensitivity meets the requirements

# BW-SCFD1200

## • Anti-theft System



Technology Parameter

Product name	EAS Retail Alarm Security Scanner Gate System
Scanning frequency	180±1MHz
Center frequency	8.2MHz±0.5MHz
Detection distance	1.0-1.8 meters (related to the specifications of the detection label)
Detection area	≥95%
Power supply	≤15 W
Dimensions	1560X350X98mm
Material	luxury stainless steel, steel pipe sprayed, steel plate base
Door distance of soft tags	can reach 1.2 meters
Distance of hard tags	can reach 1.8 meters
Application	Anti-theft inspection of supermarkets, clothing, shopping malls, etc.

Appearance and characteristics:

- Adopt ABS757 high-strength material imported from Taiwan
- Safe and environmentally friendly, anti-aging, no fading, no deformation
- Top inlaid LED sound and light warning light
- Combined with bottom window type alarm counter
- The overall streamline is generous and decent, simple and fashionable, leading the industry trend

Scope of application:

It is widely used for anti-theft inspection of various commodities such as supermarkets, shopping malls, clothing, wine bottles, etc.

Transportation Facilities Series

BW-JTD180

Traffic Light

Technical Parameter

Product name	Traffic Light
Material	Aluminum Alloy+PC
Light source	bright led chip
Power	12W
LED Color	Red Green
Reliability	MTBF≥10000 hours
Relative Humidity	≤95%
Application	Road Safety Led Warning Lights
Lamp Diameter	1000mm/200mm/300mm/400mm



Feature:

- 1. LED lifespan is up to 10000 hours. Red LED with 6300 brightness, Green LED with 12480 brightness. LED light emitting diode is a light source, with stable performance and ideal display effect.
- 2. Black Housing & Water Resistant - Durable black housing ensures durability and a multi-layer seal protects the lens from dust and a water seal to keep it protected from water in harsh weather environments. The waterproof grade is Ip65.
- 3. Spiderweb Lens and Modules: It is made of spiderweb and button lenses, and can have astigmatism, bright but not dazzling. It has two modules (green and red) with a diameter of 100mm. Each light has a visor for front viewing.
- 4. Working voltage and easy installation: working voltage of 86-265 VAC, 50/60 Hz; installation can be horizontal or vertical. Red light to the R terminal, the green light to the G terminal, common is the public line.

BW-GT3500

Security Guard Booth

Advantages:

Easy move

1.2x1.2x2.3 meter size. Small and simple, two people can move it by hand.Total weight: 80 KG,easy move We have steel base on the bottom, so it is easy use the forklift to move it.

Insulation

50mm EPS insulation wall and roof EPS panel insulation much better than plastic.

Strong steel base

The sentry box is use strong steel base with strong wooden plate on the bottom.

Non-slip floor

The floor could be Non-slip aluminum alloy plate or rubble floor.

OEM/ODM

Our normal standard sentry box is 0.276mm thickness for EPS panel iron, the floor will be rubber floor, if you want change to other material, please tell us.

Inside layout

Squat and seat model are both available. You can add shower and floor drain in the outlet pipe/waste tank model. Light, switch,basin, flush machine, exhaust fan are installed with toilet.



Easy installation:

All parts for this portable toilet are assembled by screws and bolts instead of welding. Two men can finish assembling one unit within 1 hour.

Technical Parameter

Product name	Sentry Box Portable Kiosk Security Guard House Security Booth
Color	Blue & white security room, red brick, wooden or customized
Structure	Aluminum frame & sandwich panel
OEM/ODM size	Customers' requirement security guard kiosk
Standard size	1.2*1.2*2.3m with 0.276mm EPS panel iron, rubber floor
Size 1	1.2x1.2x2.3 meter
Size 2	1.2x1.5x2.3 meter
Size 3	1.5x1.5x2.3 meter
Size 4	2.5x1.5x2.3 meter
Exhaust fan	Yes
Light	Bulb
Desk	Yes
Door	Eps with lock
Window	Aluminium alloy window for security guard kiosk
Floor	PVC floor & aluminium floor
Wall	50mm Eps pannel
Assembly	Detachable or full assembly
Weight	85kg for standard model
Package	Flat package, all components for security room are well wrapped

BW-STC35

Stackable Traffic Cone

Features

EVA rubber/plastic cone road cone

Product material: EVA material

Product reflection: honeycomb lattice reflective film, LOGO can be customized

Good flexibility, compression resistance: good flexibility, strong reduction ability, can quickly return to its original shape after rolling

Reflection at night: Under the illumination of light at night, the lattice reflective film will reflect light, improve warning, super reflective, and use more safely.

Anti-heat, anti-cold

The large base is more stable, strong wind resistance, thickened and widened octagonal base, durable

Height: 900mm

Top diameter: 60mm

Bottom diameter: 440mm

Height: 710mm

Top diameter: 55mm

Bottom diameter: 420mm

Height: 470mm

Top diameter: 55mm

Bottom diameter: 320mm



Description

**MULTI FUNCTIONS** - The safety cones can be used in personal or public areas, like gardens, parking lots, roads, and squares. Create caution or work areas in your driveway or marks off safe places for kids to play in the driveway or playground.

**PREMIUM PVC MATERIAL** - The traffic barricade is made of environmentally friendly PVC material. The safety cones are flexible, weighted, and durable, also can be continuously overlapped, and will not take up too much space

**2 REFLECTIVE COLLARS** - With 2 reflective strips, the cones are highly visible during day or night. The 360 degrees



of visibility is a significant alternative even in fog, rain, snow, or other bad conditions.

**DURABLE AND STABLE** - Each traffic cone is heavy-duty, it's a great barrier that can stand high temperatures, sun burning, cold icing, or heavy crash.

**EASY TO STORE** - The base size of tall cones is 13" X 13", and each cone can be continuously overlapped which only takes a small space in your car or garage. Can carry the big cones conveniently.

## BW-JTJ25

### •Traffic Safety Convex Mirror

#### Technical Parameter

Product name	outdoor unbreakable traffic road safety convex mirror
Angle	wide angle viewing
Feature	wearproof, anti-UV, highly
Material of mirror back	ABS, galvanizing steel
Color of mirror back	orange, black, red
Material of mirror surface	acrylic or PC or Stainless Steel
Mirror image	visible, clear and accurate
Type	indoor and outdoor
Mirror thickness	0.8-2.0mm



#### Convex Mirror Feature:

The mirror surface and back are separately made from acrylic polycarbonate (PC) and ABS which is characterized by clear image, anti-impaction. It does not become deformed while reflecting. Our convex mirror is furnished with frame forming with mirror back which is not only beautiful but also can reduce the solar reflection and ameliorate drivers' uncomfortable feelings:

1. Suitable for convenient shop, and big supermarket, the turning of the road, factory, parking lot and any other corner where need anti-theft.
2. Not easy to consume, anti-ultraviolet radiation, can use for a long time.
3. Firm, long time using and anti-crash.
4. Clear mirror image.
5. Weight of the mirror is light and can be safely used.
6. Use soft cloth with warm water to clean.
7. Mirror material: imported PC or acrylic; Mirror back material: ABS.
8. Easy installation.

## BW-RP15

### •Rope Poles

#### Technical Parameter

Product name	Traffic Safety Road Barrier Roadside Guardrail
Color	Black and yellow
Material	Armorflex
Barrier height	500/800/1100mm
Feature	Coupling structure Quick disassembly Flexible assembly Convenient
Capacity	1.5T, 5km/h
Application	Fence Mesh
Bollard outer diameter	125mm/160mm
Type	Flexible Barrier
Use for	Anti-collision Post Column Pillar



## Enterprise Certification

